

Changes to the Policies Map (Reg 19)

2021

1	Introduction	1
2	Changes to the Policies Map	2
2.2	Proposed additions to the Policies Map	2
2.3	Proposed amendments to the Policies Map	3
2.4	Proposed deletions from the Policies Map.....	6
2.5	Layers taken forward from UDP 2006 and Local Plan 2012 with no change	6
3	Mapping Additions	7
3.1	Public Open Spaces.....	7
3.2	Site Proposals	8
3.3	Article 4 – B1a & B1c to C3.....	9
3.4	Local Centres	10
3.5	Safeguarding Crossrail 2.....	11
4	Mapping Amendments	14
4.1	Green Belt	14
4.2	Metropolitan Open Land (MOL)	29
4.3	Locally Significant Industrial Sites (LSIS)	48
4.4	Business Locations	59

1 Introduction

- 1.1.1 The National Planning Policy Framework (NPPF) requires land-use designations and allocations to be identified on a policies map. Planning Practice Guidance states that the policies map should illustrate geographically the policies in the plan and be reproduced from, or based on, an Ordnance Survey map. If the adoption of a local plan would result in changes to a previously adopted policies map, when the plan is submitted for examination, an up to date submission policies map should also be submitted, showing how the adopted policies map would be changed as a result of the new plan.
- 1.1.2 In accordance with the requirements above, this document sets out the proposed additions, amendments and deletions from the Policies Map produced for the Unitary Development Plan (UDP) (2006) and subsequent changes shown in Barnet's Local Plan (2012).
- 1.1.3 The Policies Map produced in 2006 and subsequent changes shown in maps in the 2012 Development Plan will be superseded by a new Policies Map for the new Local Plan which will include the changes identified in this document. The new Policies Map will be available from the date the Local Plan is formally adopted.

2 Changes to the Policies Map

2.1.1 The changes listed in the tables below include proposed additions, amendments and deletions from the existing Policies Map (2006) and subsequent changes set out in the Local Plan (2012). Those that are to be taken forward with no change are also shown at the end of this section.

2.2 Proposed additions to the Policies Map

Proposed additions to the Policies Map	Relevant Local Plan policy (as set out in the Local Plan (Reg 18))	Map reference
Public Open Spaces	ECC04 – Barnet’s Parks and Open Spaces	Map 1
Site Proposals	GSS01 – Delivering Sustainable Growth	Map 2
Article 4 – B1a & B1c to C3	ECY01 – A Vibrant Local Economy	Map 3
Local Centres	TOW01 Vibrant Town Centres	Map 4
Safeguarding Crossrail 2	GSS09 – Existing and Major New Transport Infrastructure TRC02 – Transport Infrastructure	Map 5
Growth Areas and Opportunity Areas	GSS01 – Delivering Sustainable Growth	Map 6
Flood Risk	ECC02A – Water Management	Map 7

Table 2.1 – Proposed additions to the Policies Map

2.3 Proposed amendments to the Policies Map

Current designation (as it appears on the 2006 Policies Map and subsequent changes set out in the 2012 Local Plan)	Proposed amendments to the designation		Map reference
Green Belt	<ul style="list-style-type: none"> - Watling Street 1km south of Elstree – addition - Land northeast of Brockley Crescent, Edgwarebury - addition - Land to rear of 14-28 Brockley Crescent, Edgwarebury – removal - Watling Street and Spur Road, Edgwarebury - addition - M1 near Moat Mount - addition - Highwood Hill and Marsh Lane, Mill Hill – addition - Lawrence Sreet, Mill Hill – removal - Milespit Hill, Mill Hill – removal - Firth Lane, Mill Hill – addition - Brett Road, Chipping Barnet – addition - Rowley Green Road, Arkley – addition - M1 at Junction 4 (Edgware Way), Elstree – addition - Edgware Way at Watling Street, Elstree – addition - Jewish Community Secondary School, Westbrook Crescent New Barnet - addition 	<ul style="list-style-type: none"> 2.509ha 0.231ha - 0.068ha 0.153ha 1.798ha 0.059ha - 0.107ha - 0.822ha 0.748ha 0.203ha 0.205ha 0.144ha 0.014ha 0.362ha 	<ul style="list-style-type: none"> - Map 8 - Map 9 - Map 10 - Map 11 - Map 12 - Map 13 - Map 14 - Map 15 - Map 16 - Map 17 - Map 18 - Map 19 - Map 20 - Map 21
Metropolitan Open Land (MOL)	<ul style="list-style-type: none"> - Jewish Community Secondary School (1) – removal 	<ul style="list-style-type: none"> -0.258ha 	<ul style="list-style-type: none"> - Map 22

	<ul style="list-style-type: none"> - Jewish Community Secondary School (2) – removal - New Southgate Cemetery and Recreation Ground – removal - Whetstone Stray – addition - Finchley Catholic School Sportsfield – addition - Friern Barnet Retail Park Open Space (1) – removal - Friern Barnet Retail Park Open Space (2) – removal - Friern Barnet Retail Park Open Space (3) – addition - Friern Barnet Retail Park Open Space (4) – addition - Friern Barnet Retail Park Open Space (5) – removal - Colney Hatch MOL East – removal - Colney Hatch MOL West – addition - Glebelands and Coppetts Woods (1) – removal - Glebelands and Coppetts Woods (2) – addition - Glebelands and Coppetts Woods (3) – removal - Mutton Brook – removal - Sunny Hill Park – removal - Hoop Lane and West London Synagogue Cemeteries – removal 	<ul style="list-style-type: none"> - 0.104ha - 0.066ha 0.280ha 0.022ha - 0.075ha - 0.270ha 0.117ha 0.009ha - 0.709ha - 0.218ha 0.015ha - 0.233ha 0.409ha - 0.153ha - 0.182ha - 0.047ha - 0.80ha 	<ul style="list-style-type: none"> - Map 23 - Map 24 - Map 25 - Map 26 - Map 27 - Map 28 - Map 29 - Map 30 - Map 31 - Map 32 - Map 33 - Map 34 - Map 35 - Map 36 - Map 37 - Map 38 - Map 39
LSIS	<ul style="list-style-type: none"> - Garrick Industrial Centre – amended boundary from 2012 - Connaught Business Centre – amended boundary from 2012 - Granard Business Centre – amended boundary from 2012 - Lancaster Road Industrial Estate – amended boundary from 2012 - Grenville Place – deletion of LSIS - Coppetts Centre Colney Hatch Lane – additional LSIS 		<ul style="list-style-type: none"> - Map 40 - Map 41 - Map 42 - Map 43 - Map 44 - Map 45

	<ul style="list-style-type: none"> - Propeller Way – additional LSIS - Hurricane Industrial Park – additional LSIS - Bittacy Hill Business Centre – additional LSIS - Falkland Road (Alston Works) – additional LSIS 	<ul style="list-style-type: none"> - Map 46 - Map 47 - Map 48 - Map 49
Business Location	<ul style="list-style-type: none"> - Colindale Technology Park and sites off Cecil Road – additional Business Location - 30 – 100 Colindeep Lane – additional Business Location 	<ul style="list-style-type: none"> - Map 50 - Map 51

Table 2.2 – Proposed amendments to the Policies Map

2.4 Proposed deletions from the Policies Map

- Co-ordinated Character
- Rail Related Employment Land
- Cricklewood Regeneration Area
- Specific Proposal Site
- Rapid Transport Link
- Road Network – GLA
- Road Network – SoS
- Road Network – Tier2
- Road Network – Tier3
- Major Development Sites in Green Belt
- Main Retail Frontage
- Secondary Retail Frontage
- Special Advertisement Control

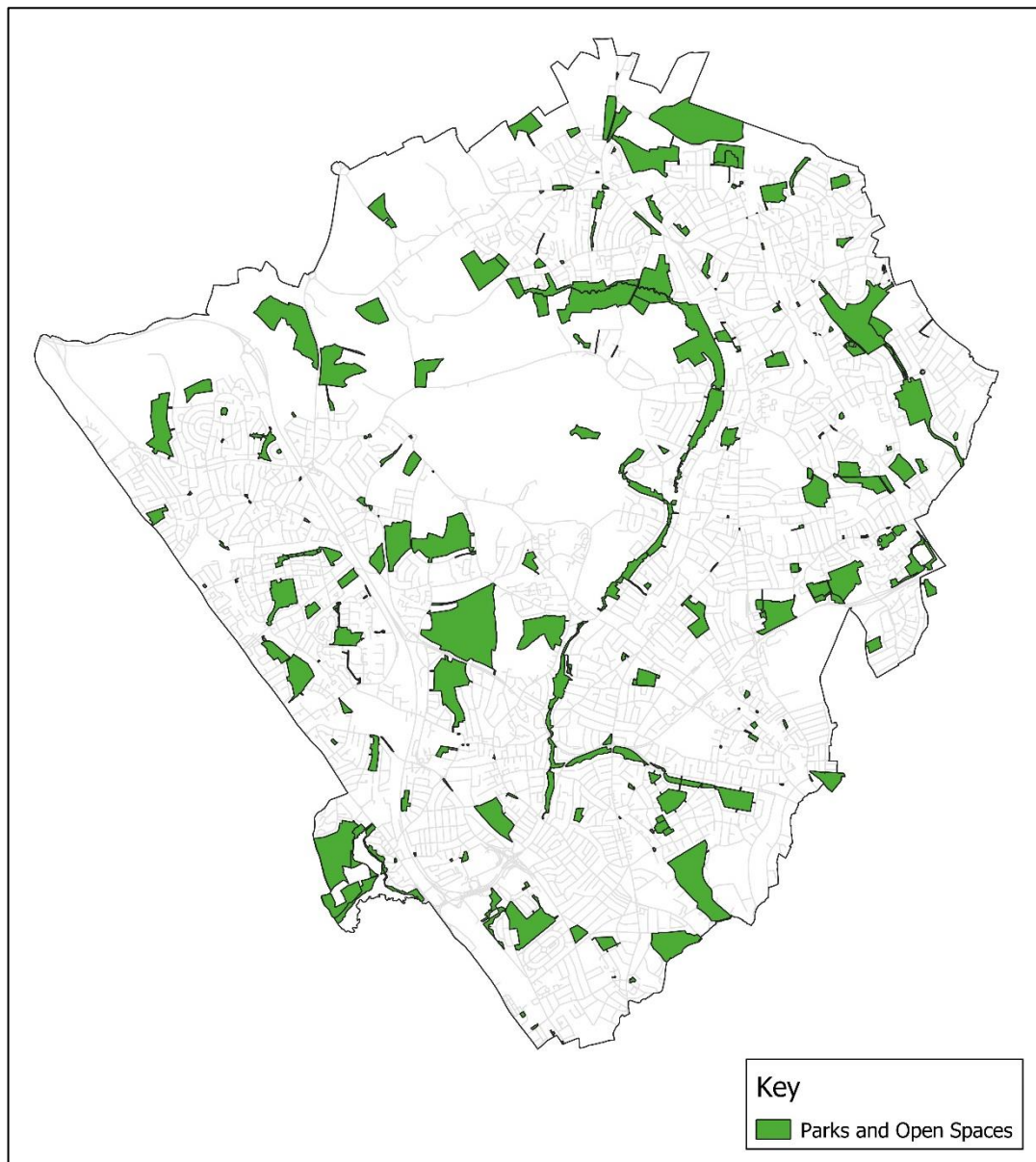
2.5 Layers to be taken forward from the Policies Map (UDP 2006 and Local Plan 2012) with no change

- Article 4 Directive 1
- Article 4 Directive 6
- Conservation Area
- Special Archaeological Significance
- Pipeline Installations
- Notifiable Installation Point
- Metropolitan Walks
- Green Chains
- Local Nature Reserve
- Sites of Borough Importance for Nature Conservation (SINC)
- Sites of Local Importance for Nature Conservation (SINC)
- Sites of Metropolitan Importance for Nature Conservation (SINC)
- Site of Special Scientific Interest (SSSI)
- Major and District Town Centres

3 Mapping Additions

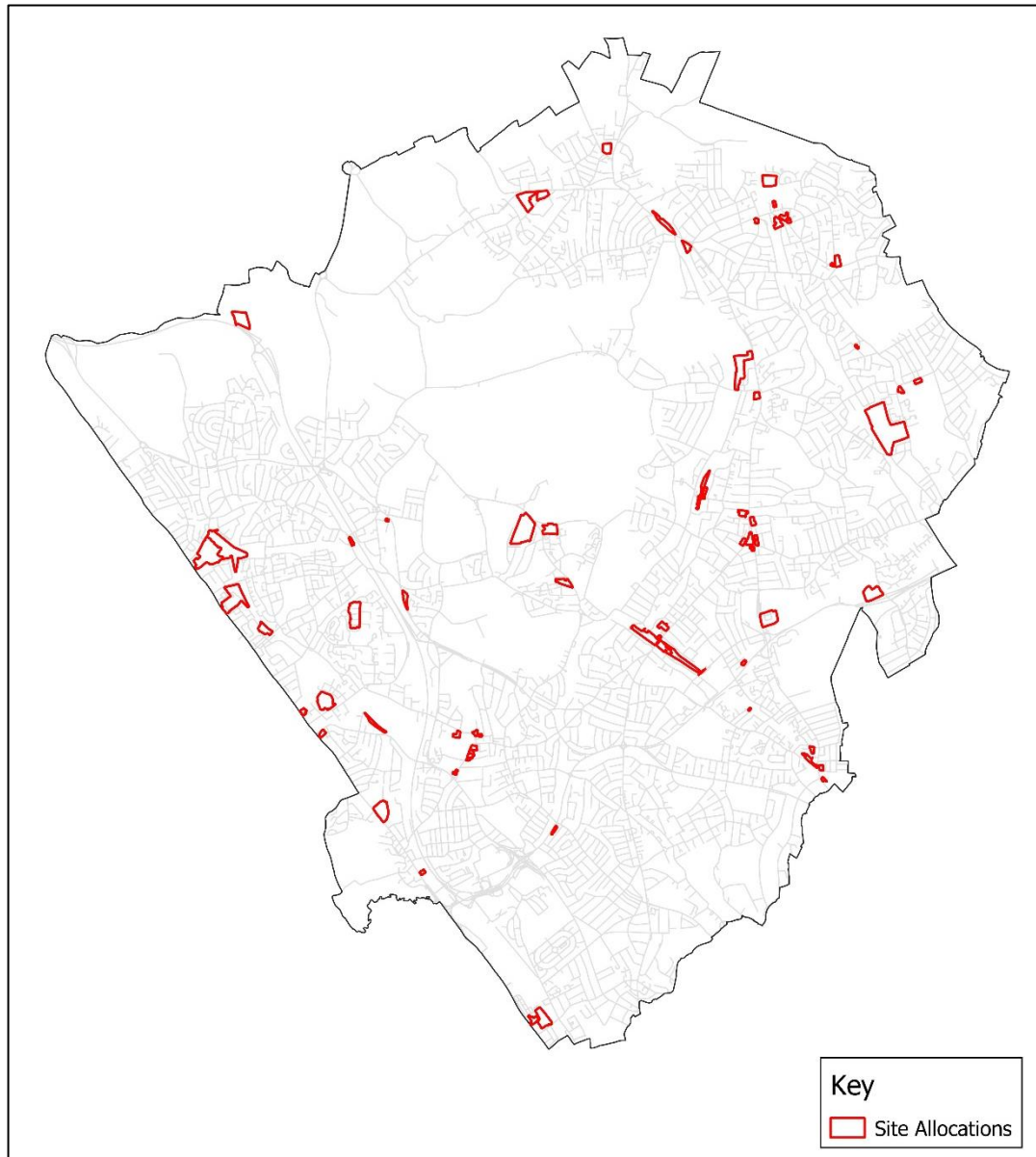
3.1 Public Open Spaces

3.1.1 The Public Open Spaces set out in Map 1 are those set out in Barnet's Parks and Open Spaces Strategy (2016-2026). These have not previously been shown on the Policies Map.



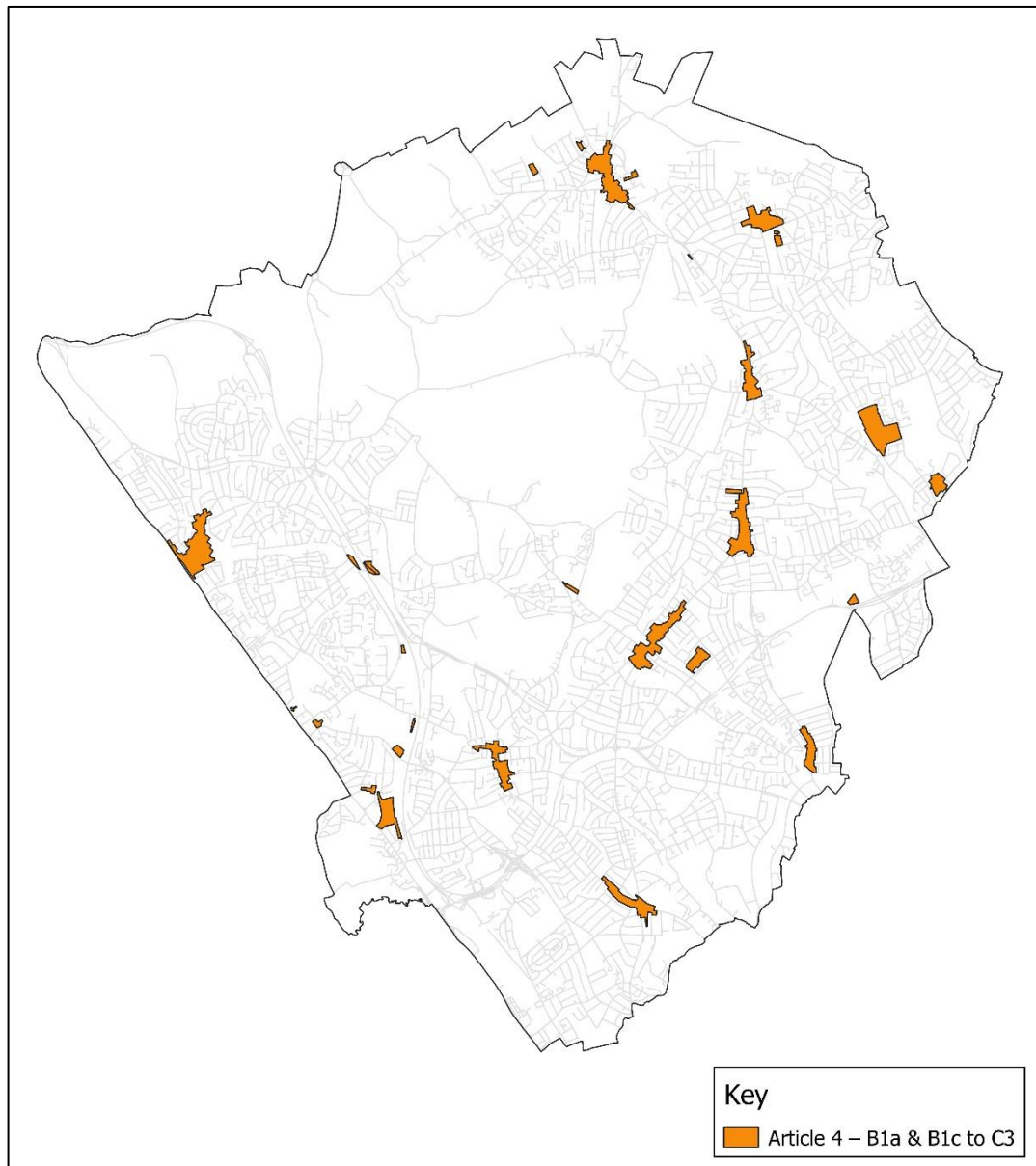
3.2 Site Proposals

- 3.2.1 The site proposal boundaries set out in the Schedule of Proposals, Annex 1 of the Proposed Submission Local Plan, are shown on Map 2. Site proposals from the 2006 UDP were previously shown on the Policies Map. Unimplemented proposals have been updated for the Local Plan.



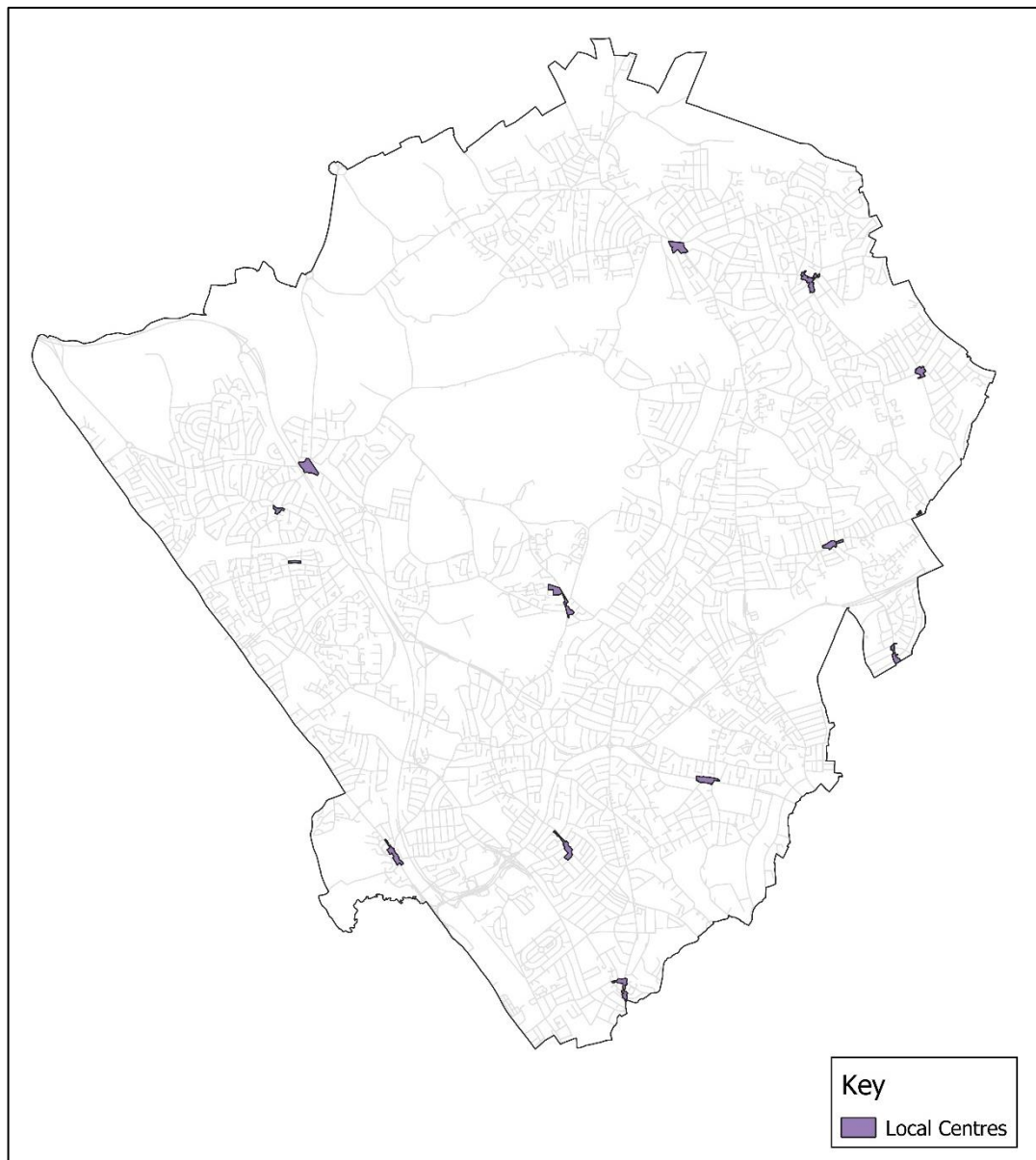
3.3 Article 4 – B1a & B1c to C3

- 3.3.1 The areas covering the B1a & B1c to C3 Article 4 Direction are set out in Map 3. The Article 4 Direction (confirmed 1st October 2019) removed permitted development rights in these specific areas of the Borough – more information [here](#).



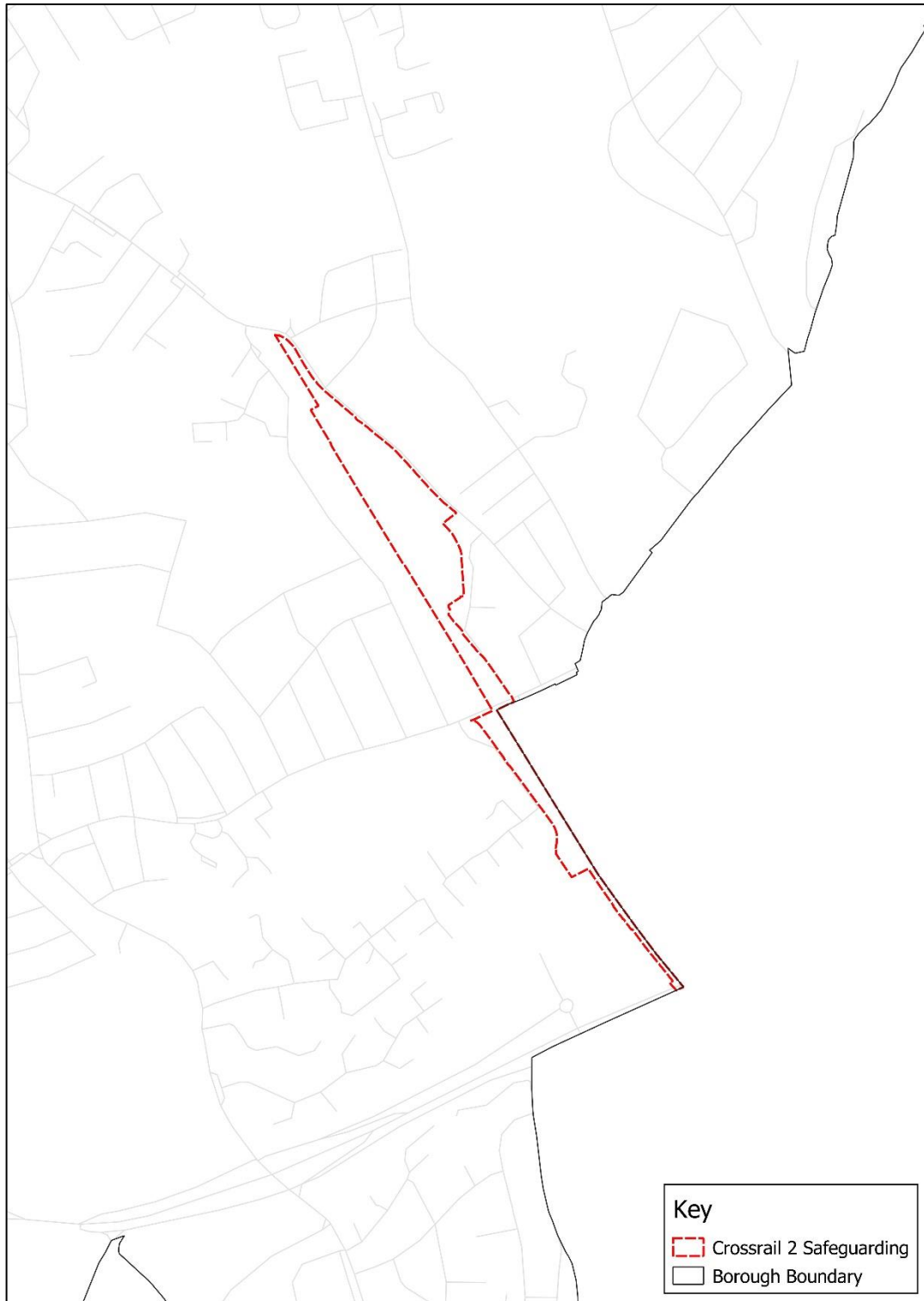
3.4 Local Centres

- 3.4.1 Barnet's Local Centres are set out in Map 4. These were not previously shown on the Policies Map but rather as a list of addresses in Appendix 6 of the Local Plan Development Management Policies Document (2012).



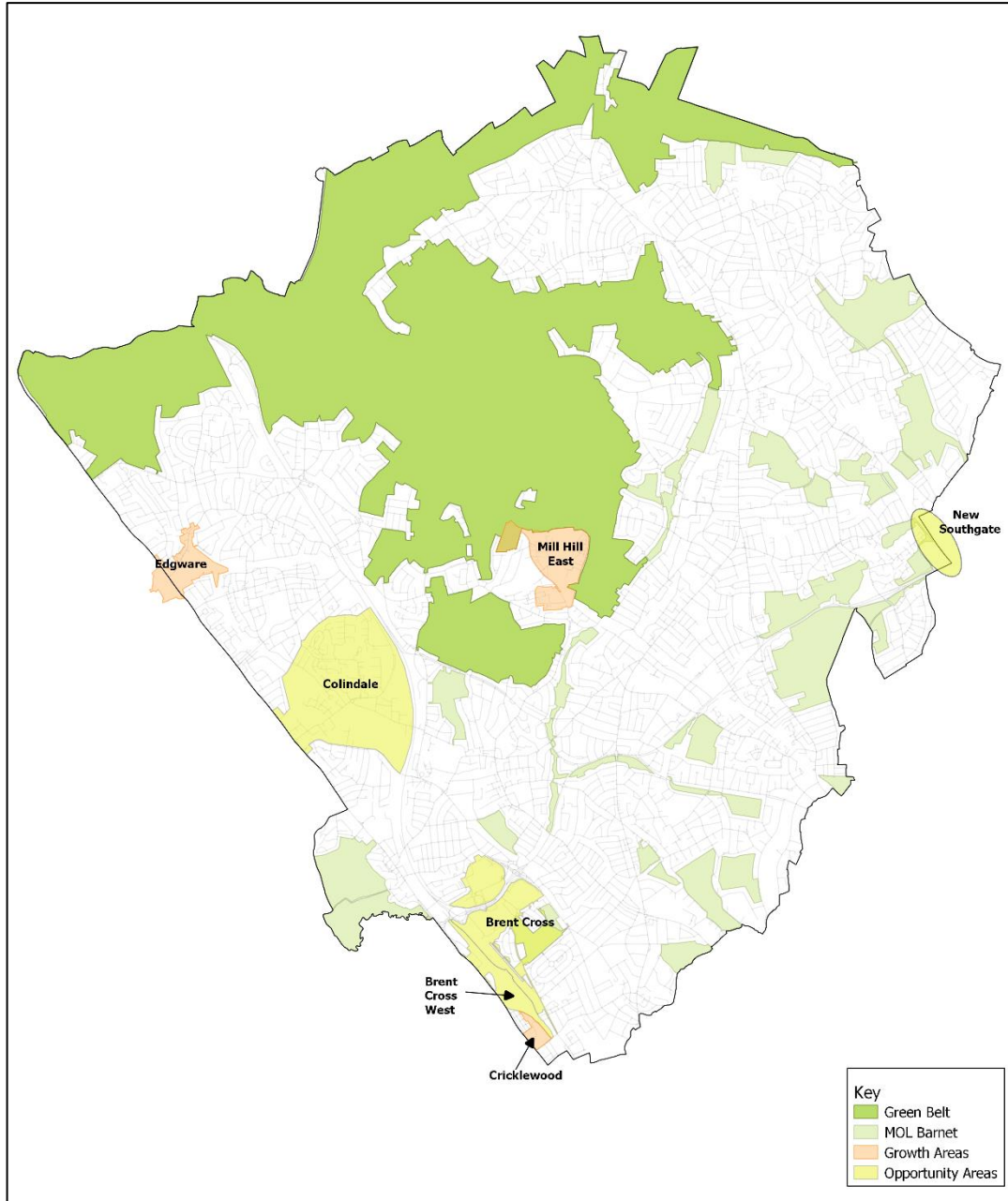
3.5 Safeguarding Crossrail 2

- 3.5.1 The Crossrail 2 Safeguard boundary is set out in Map 5. The Safeguarding Direction issued by the Department for Transport in March 2015 require local planning authorities to consult Transport for London on planning applications within the boundaries shown on the safeguarding plans before granting planning approval.



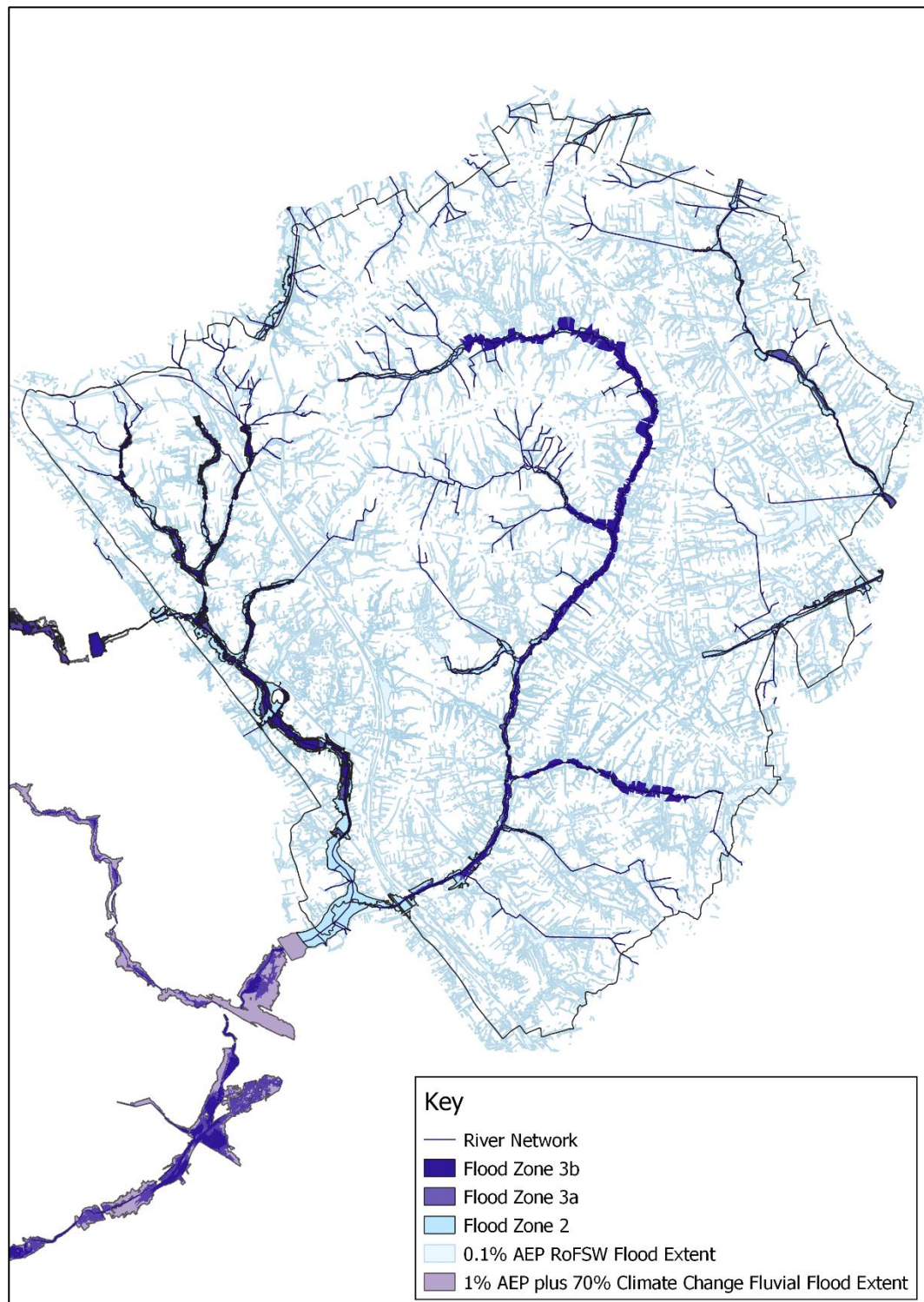
3.6 Growth Areas and Opportunity Areas

3.6.1 Barnet's Growth Areas and Opportunity Areas are set out in Map 6. These are Brent Cross – Cricklewood (Opportunity Area), Colindale (Opportunity Area), New Southgate (Opportunity Area), Brent Cross West, Edgware, Cricklewood and Mill Hill East.



3.7 Flood Risk

3.7.1 Map 7 sets out the flood risk in Barnet.

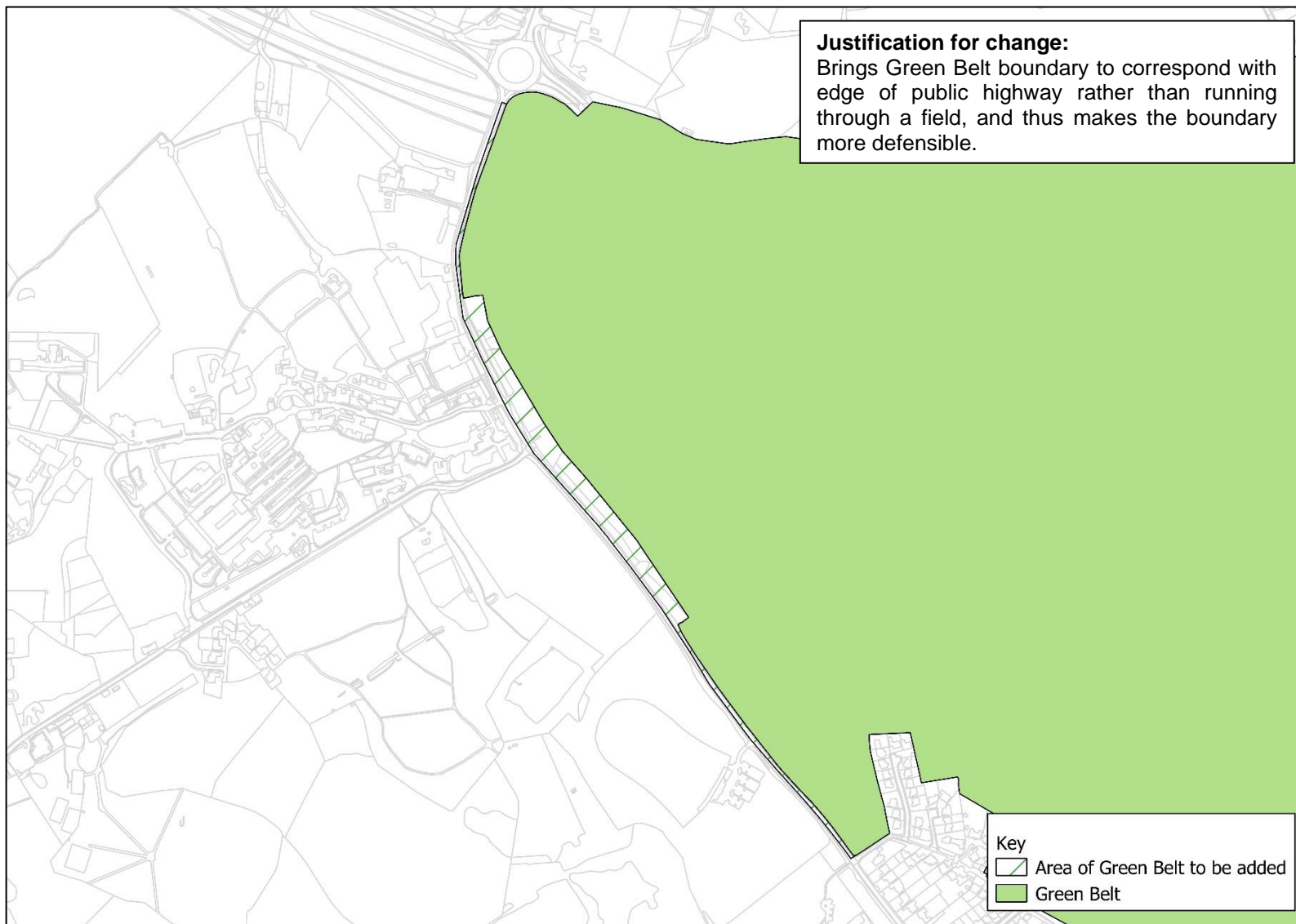


4 Mapping Amendments

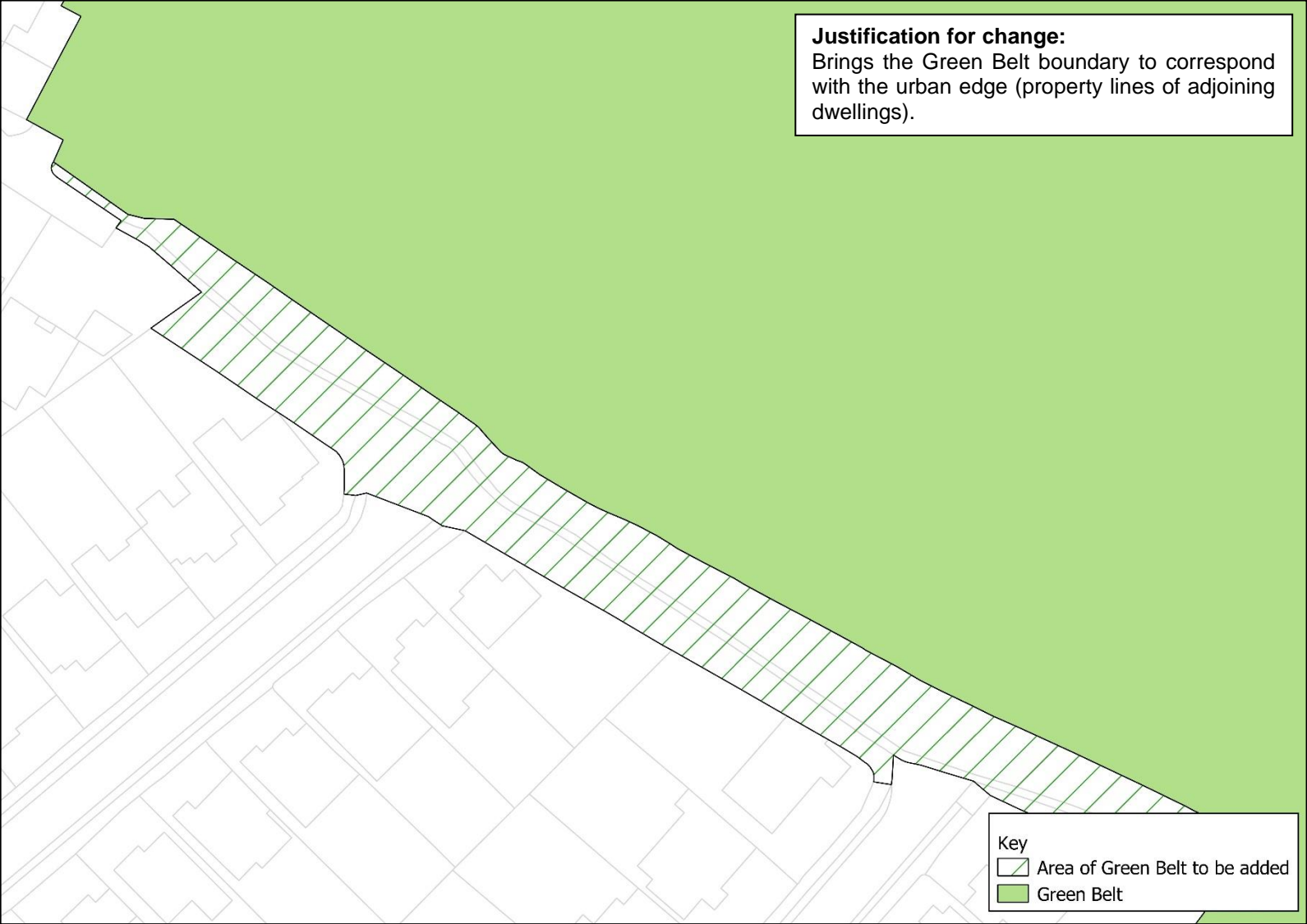
4.1 Green Belt

- 4.1.1 Barnet's Green Belt and Metropolitan Open Land (MOL) Study (2018) considered the accuracy and robustness of Barnet's existing Green Belt boundaries, with a view to highlight areas for potential realignments along alternative permanent and readily recognisable physical features where necessary. The potential minor Green Belt boundary adjustments set out in the study have been analysed and the following amendments to the Green Belt boundary, set out in Maps 8-21, are to be taken forward on the new Policies Map. This amounts to an additional 5.429ha of Green Belt land.
- 4.1.2 The following amendment maps set out below are alongside justifications setting out the reasons for addition or removal of Green Belt land which corresponds to the Green Belt and MOL Study (2018).

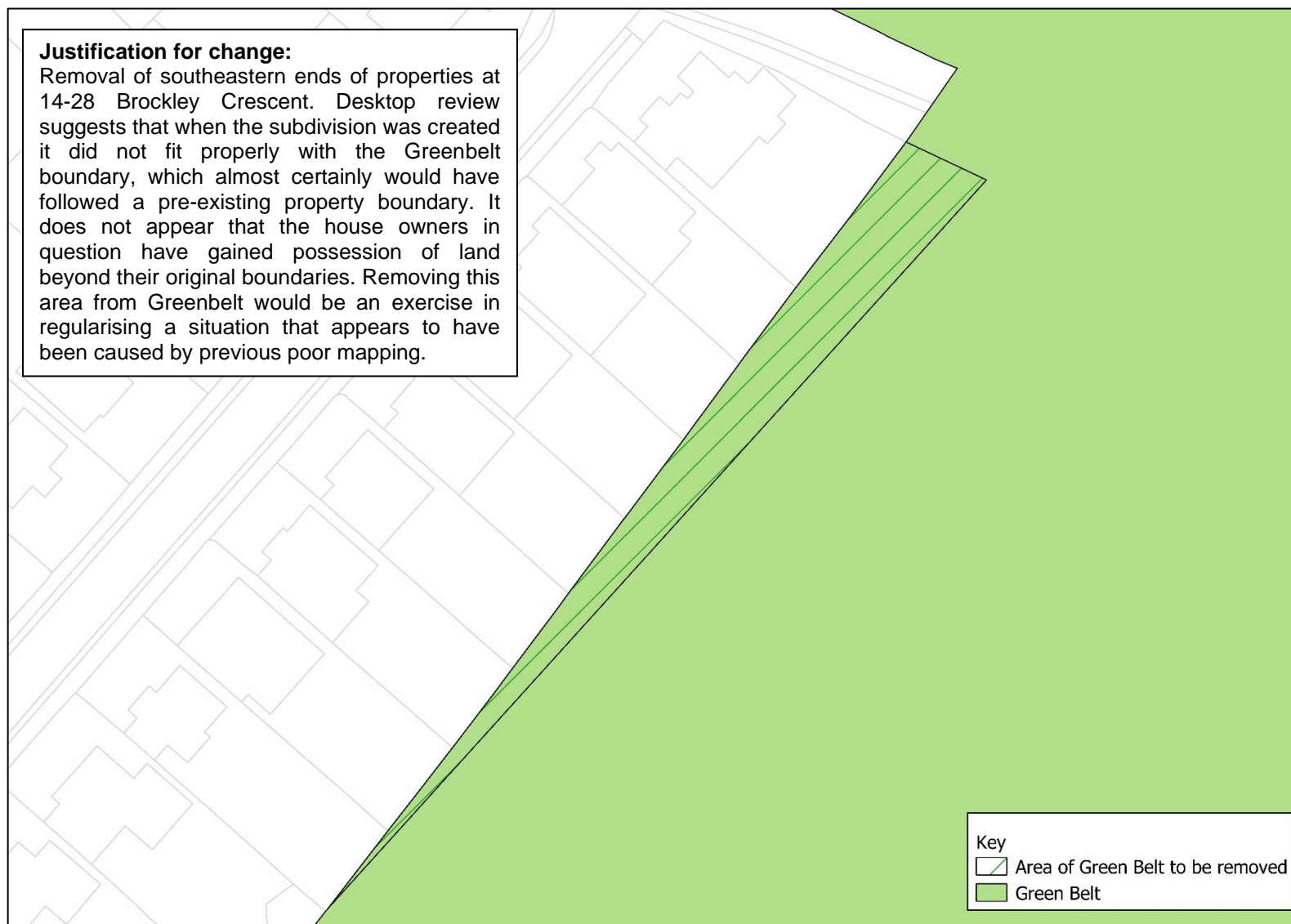
Map 8 - Watling Street, 1km south of Elstree



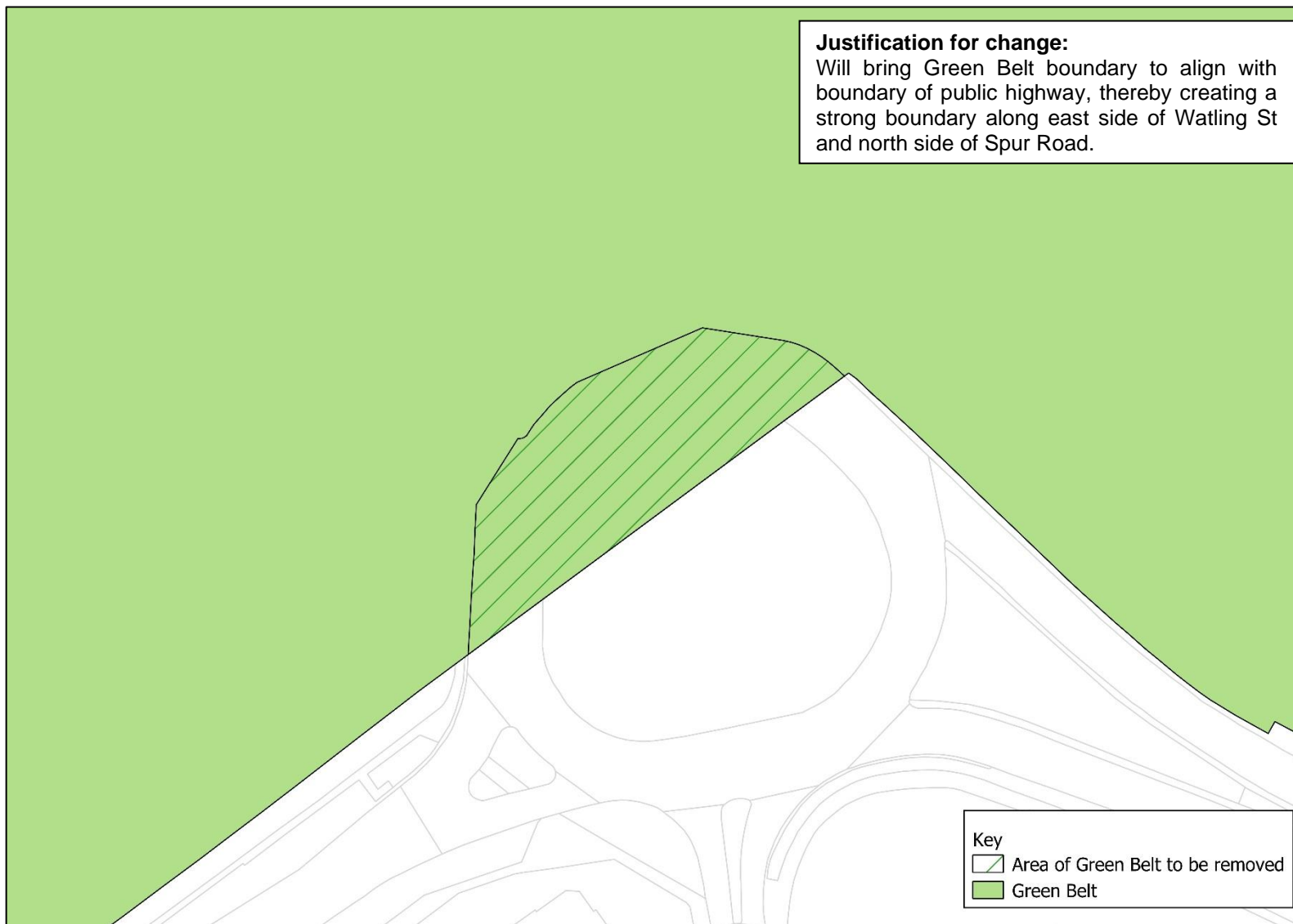
Map 9 – Land Northeast of Brockley Crescent, Edgwarebury



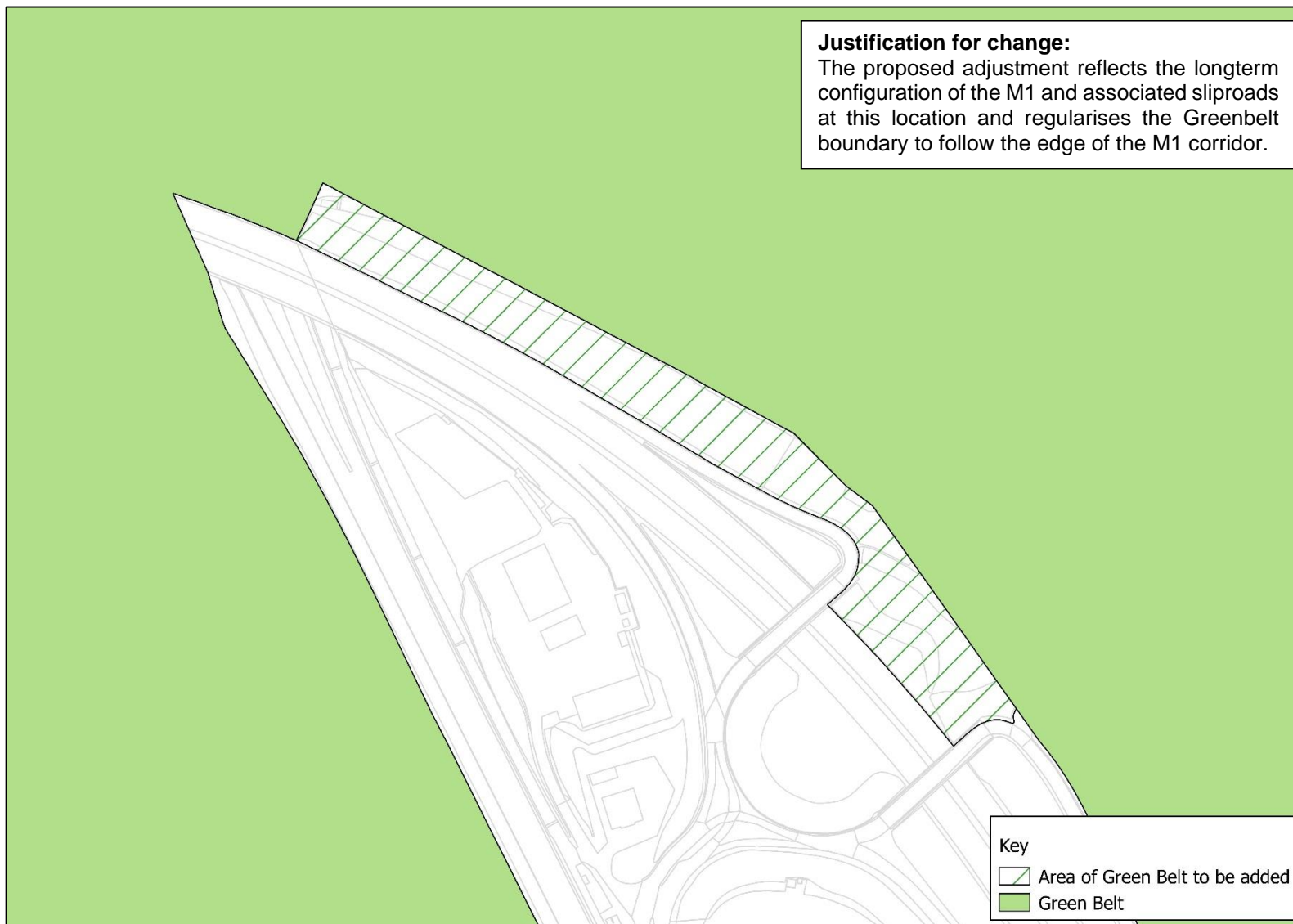
Map 10 - Land to Rear of 14-28 Brockley Crescent, Edgwarebury



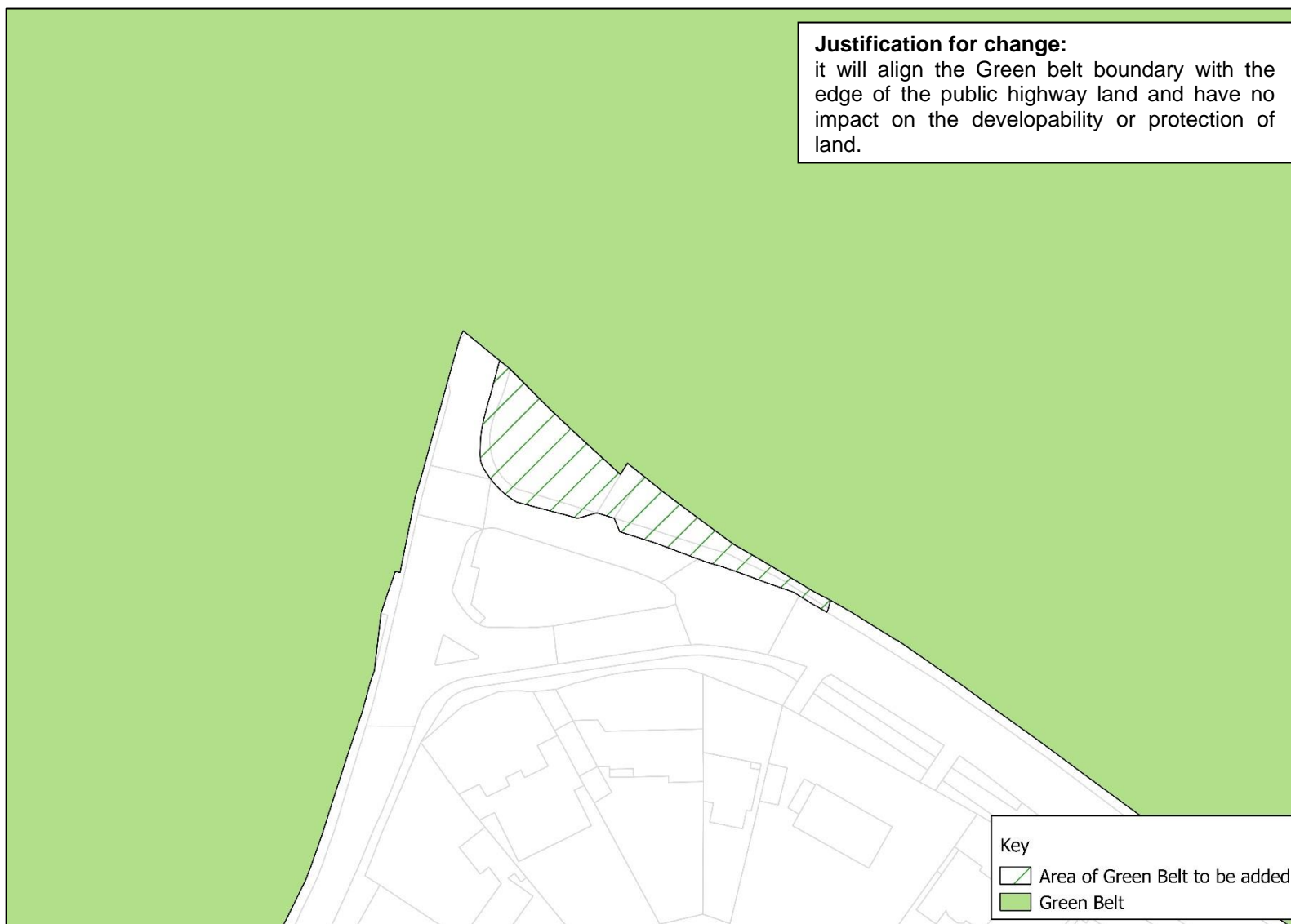
Map 11 – Watling Street and Spur Road, Edgwarebury



Map 12 – M1 Near Moat Mount



Map 13 – Highwood Hill and Marsh Lane, Mill Hill



Map 14 – Lawrence Street, Mill Hill



Map 15 – Milesplit Hill, Mill Hill



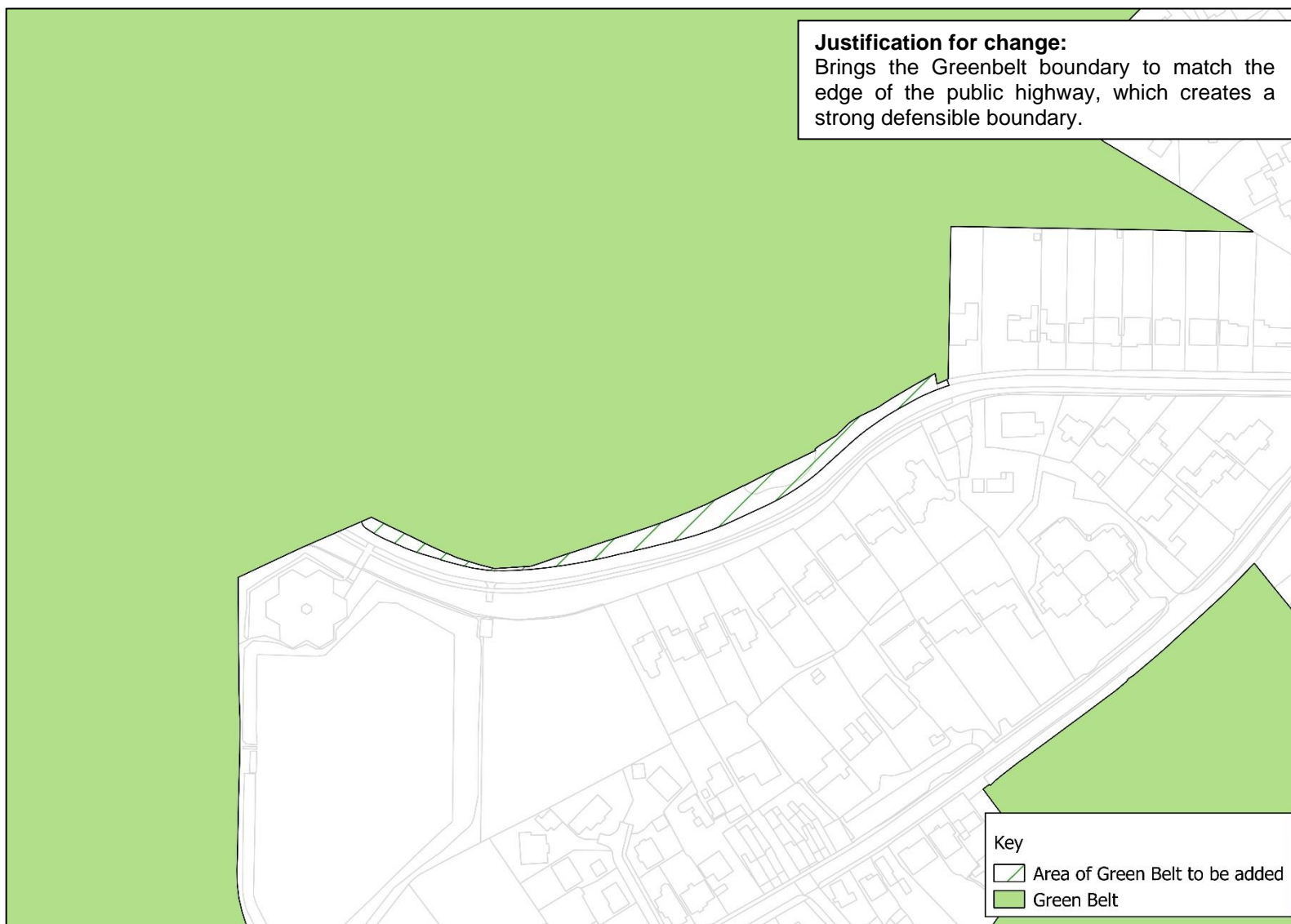
Map 16 – Firth Lane, Mill Hill



Map 17 – Brett Road, Chipping Barnet



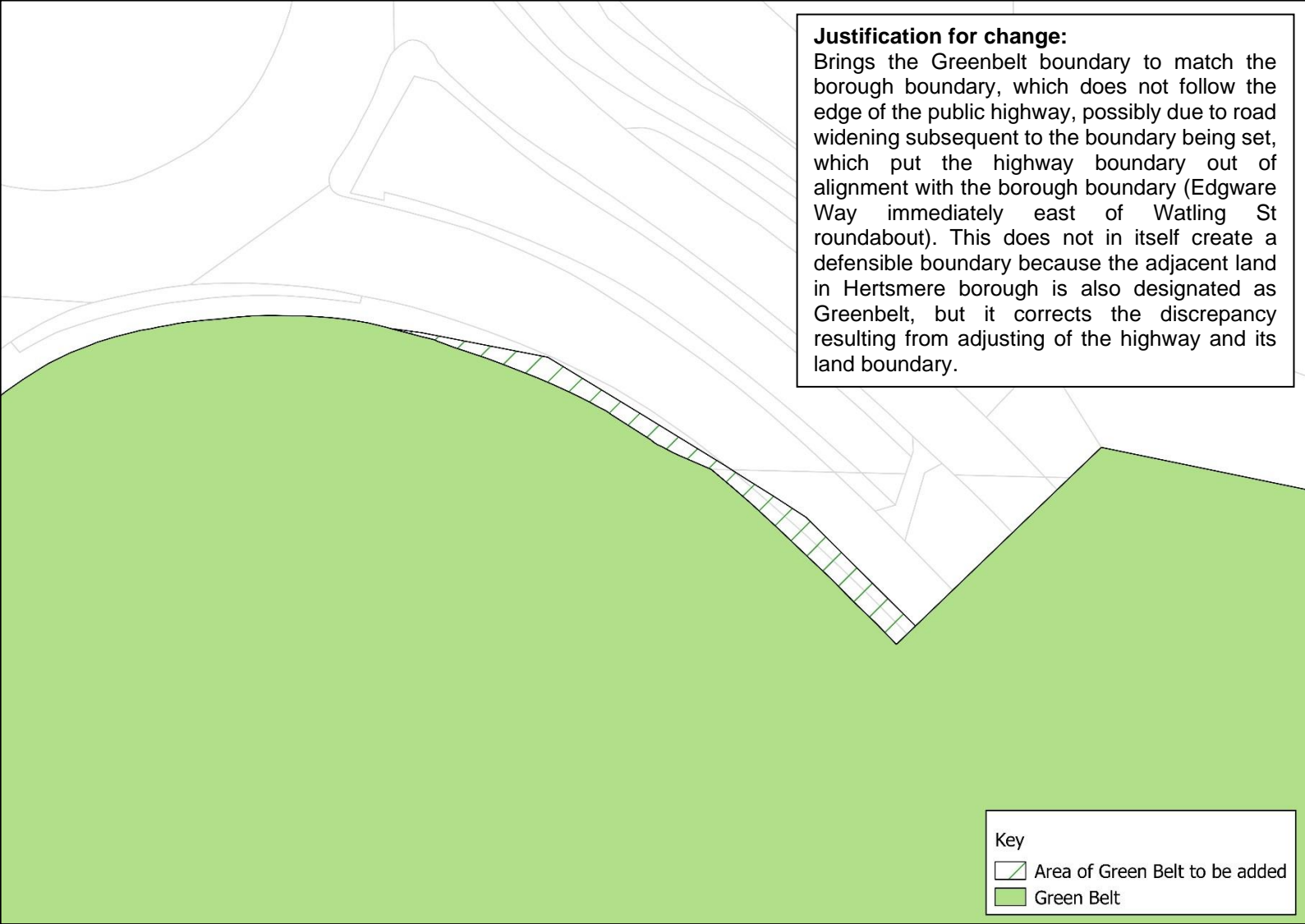
Map 18 – Rowley Green Road, Arkley



Map 19 - M1 at Junction 4 (Edgware Way), Elstree



Map 20 – Edgware Way at Watling Street, Elstree



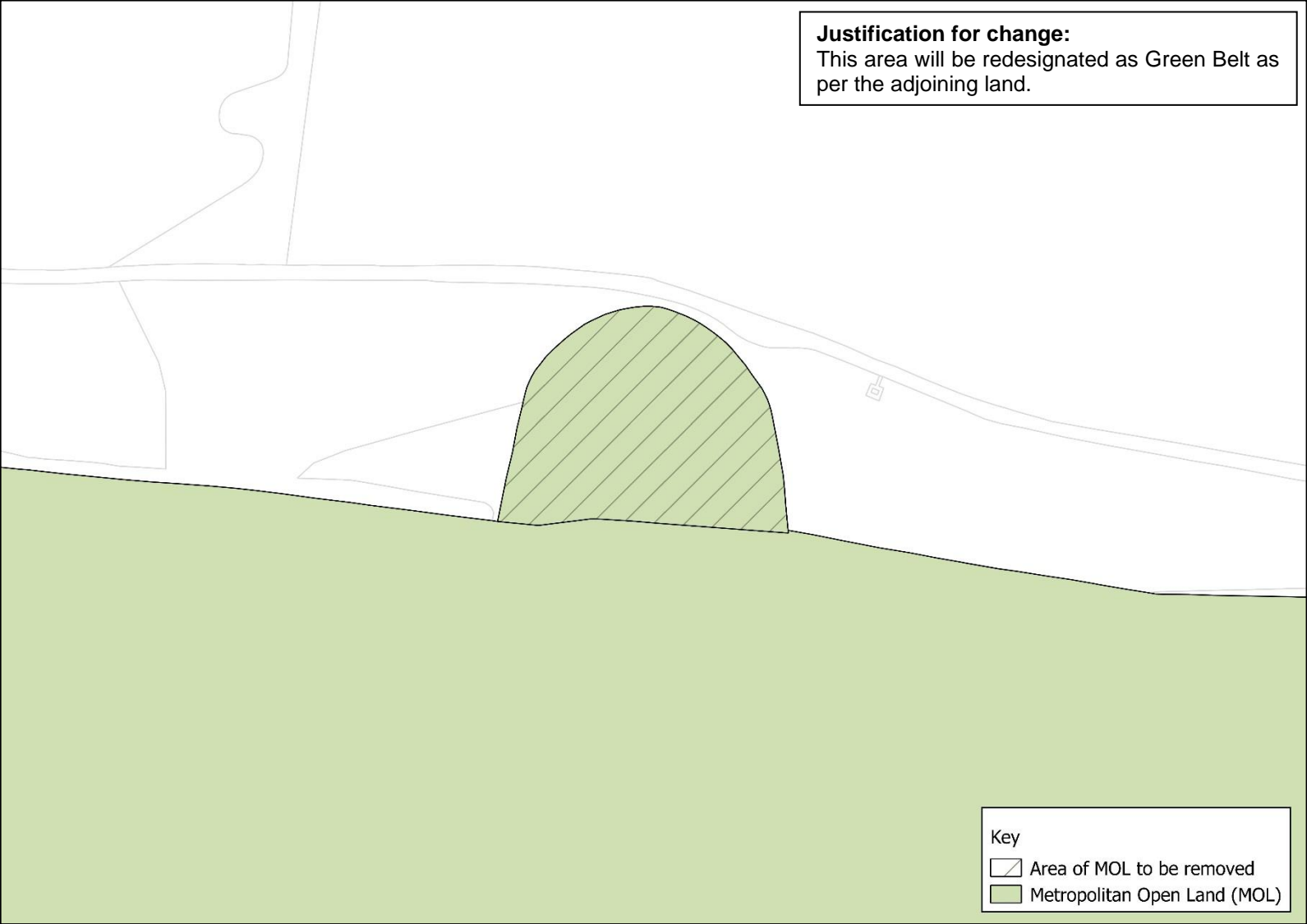
Map 21 – Jewish Community Secondary School, Westbrook Crescent, New Barnet



4.2 Metropolitan Open Land (MOL)

- 4.2.1 As with the Green Belt amendments above, Barnet's Green Belt and Metropolitan Open Land (MOL) Study (2018) considered the accuracy and robustness of Barnet's existing MOL boundaries, with a view to highlight areas for potential realignments along alternative permanent and readily recognisable physical features where necessary. The potential minor MOL boundary adjustments set out in the study have been analysed and the following amendments to the MOL boundary, set out in Maps 22-39, are to be taken forward. This amounts to a reduction of 2.263ha of MOL.
- 4.2.2 The following amendment maps set out below are alongside justifications setting out the reasons for addition or removal of MOL land which corresponds to the Green Belt and MOL Study (2018).

Map 22 – Jewish Community Secondary School (1)



Map 23 – Jewish Community Secondary School (2)



Map 24 – New Southgate Cemetery and Recreation Ground



Map 25 – Whetstone Stray



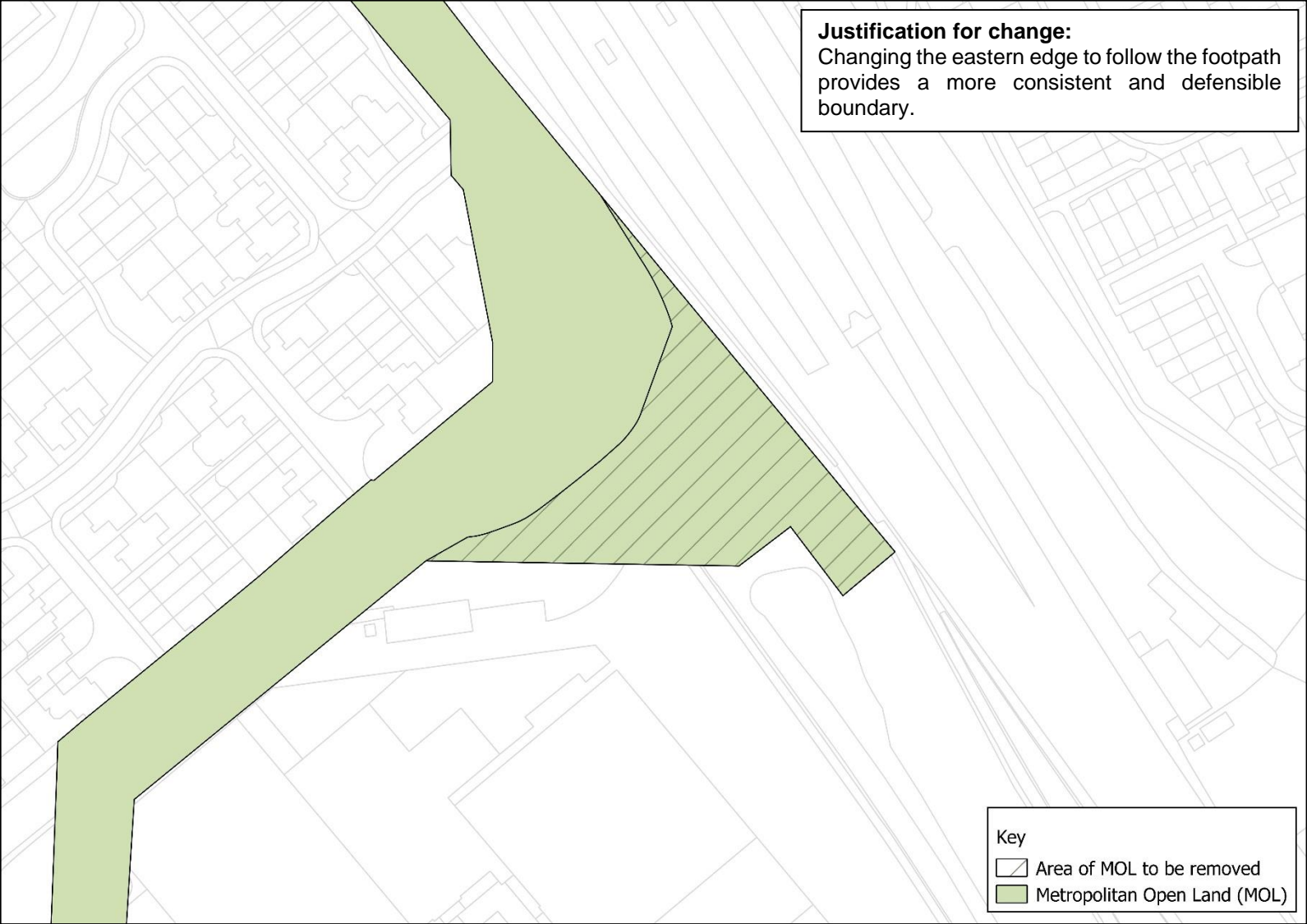
Map 26 – Finchley Catholic School Sportsfields



Map 27 – Friern Barnet Retail Park Open Space (1)



Map 28 - Friern Barnet Retail Park Open Space (2)



Map 29 - Friern Barnet Retail Park Open Space (3)



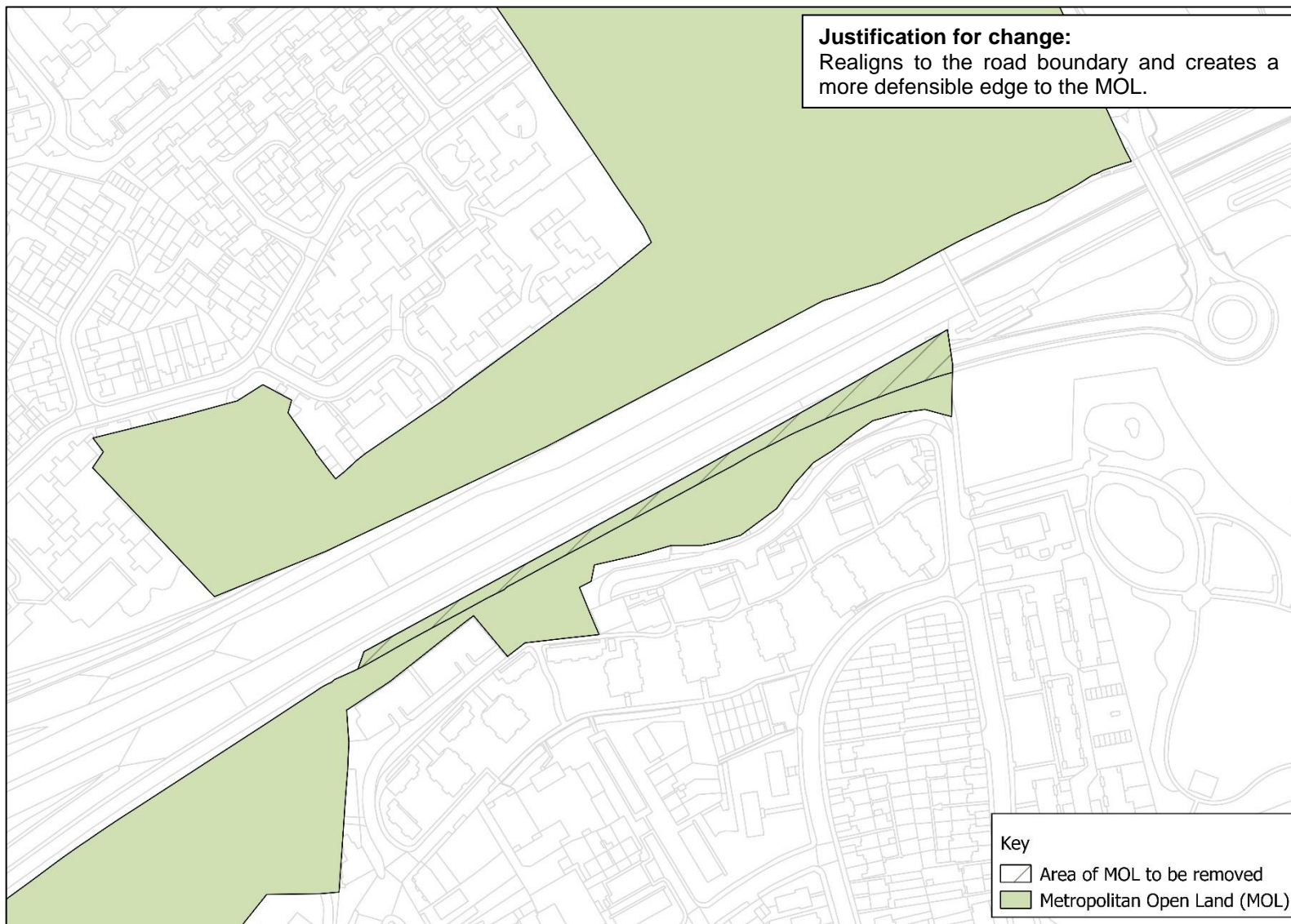
Map 30 - Friern Barnet Retail Park Open Space (4)



Map 31 - Friern Barnet Retail Park Open Space (5)



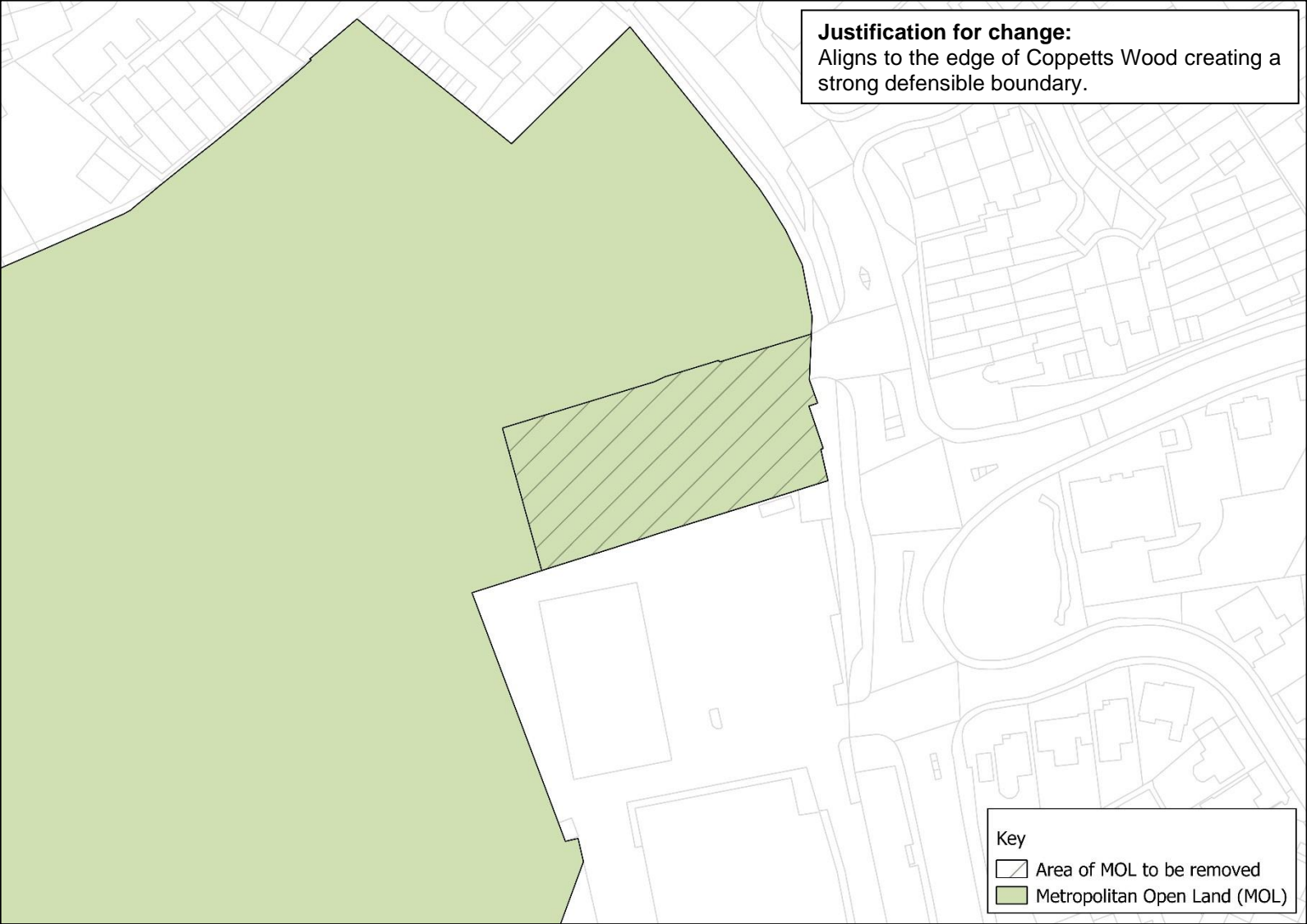
Map 32 – Colney Hatch MOL East



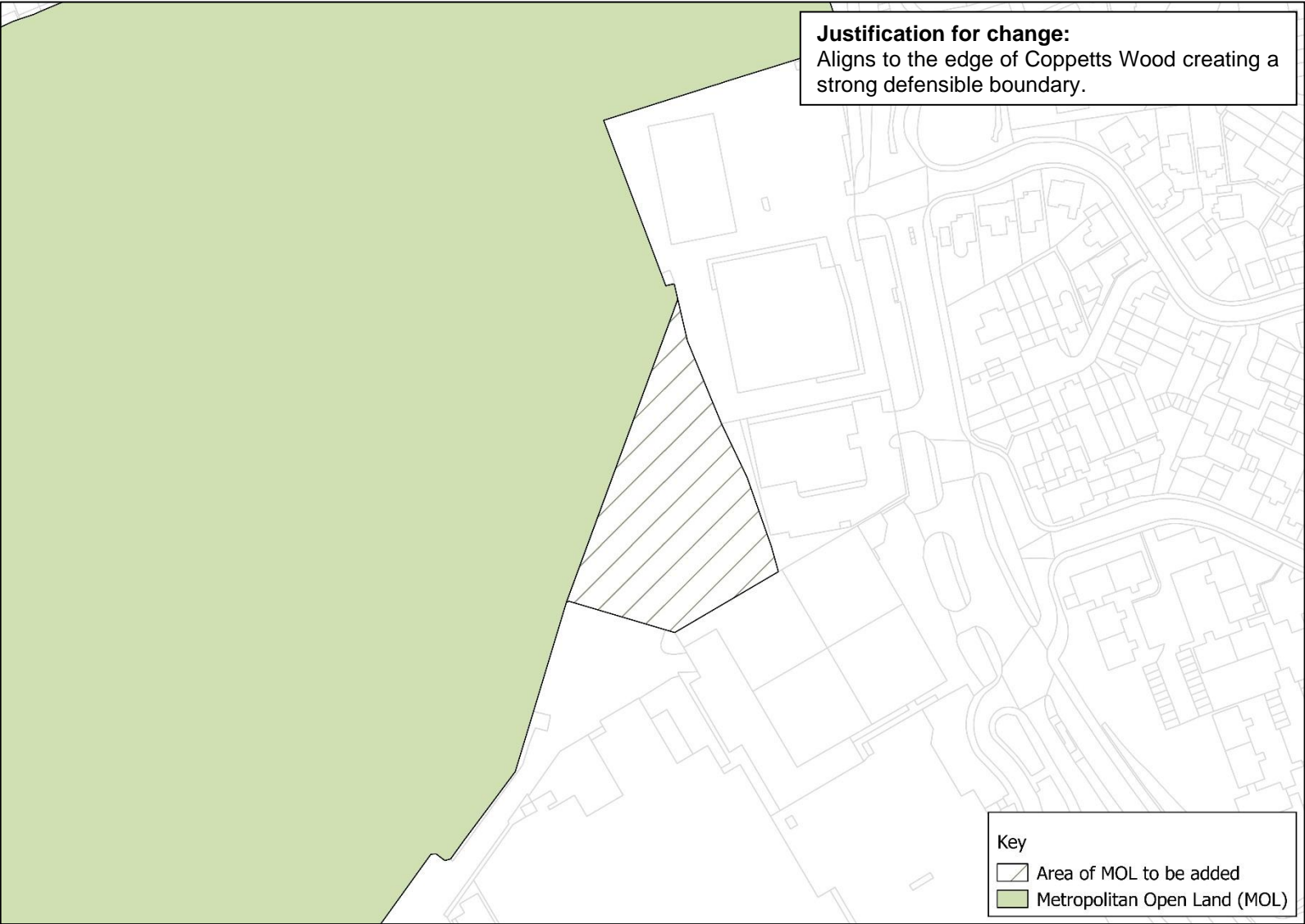
Map 33 – Colney Hatch MOL West



Map 34 – Glebelands and Coppetts Woods (1)



Map 35 - Glebelands and Coppetts Woods (2)



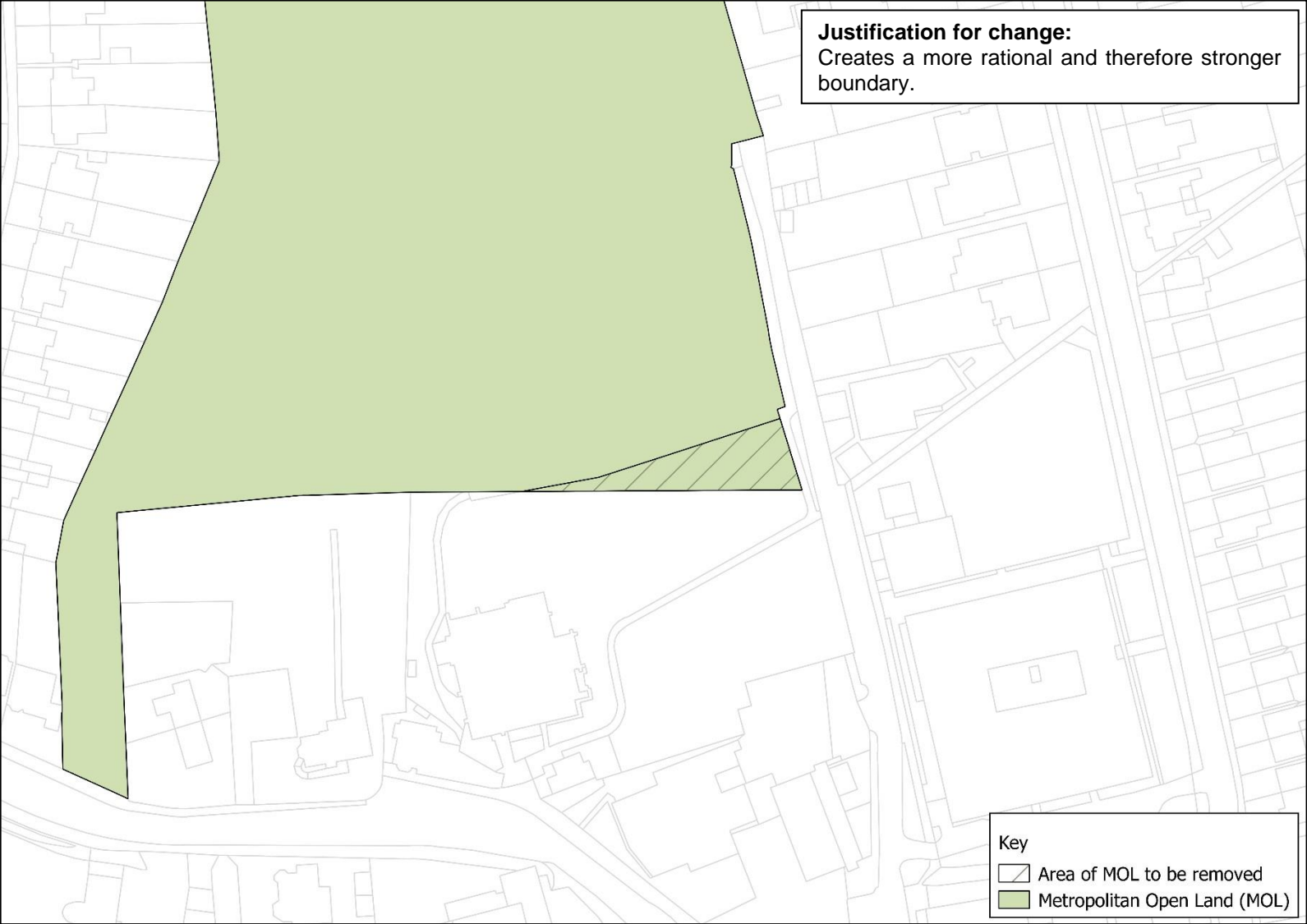
Map 36 - Glebelands and Coppetts Woods (3)



Map 37 - Mutton Brook



Map 38 – Sunny Hill Park



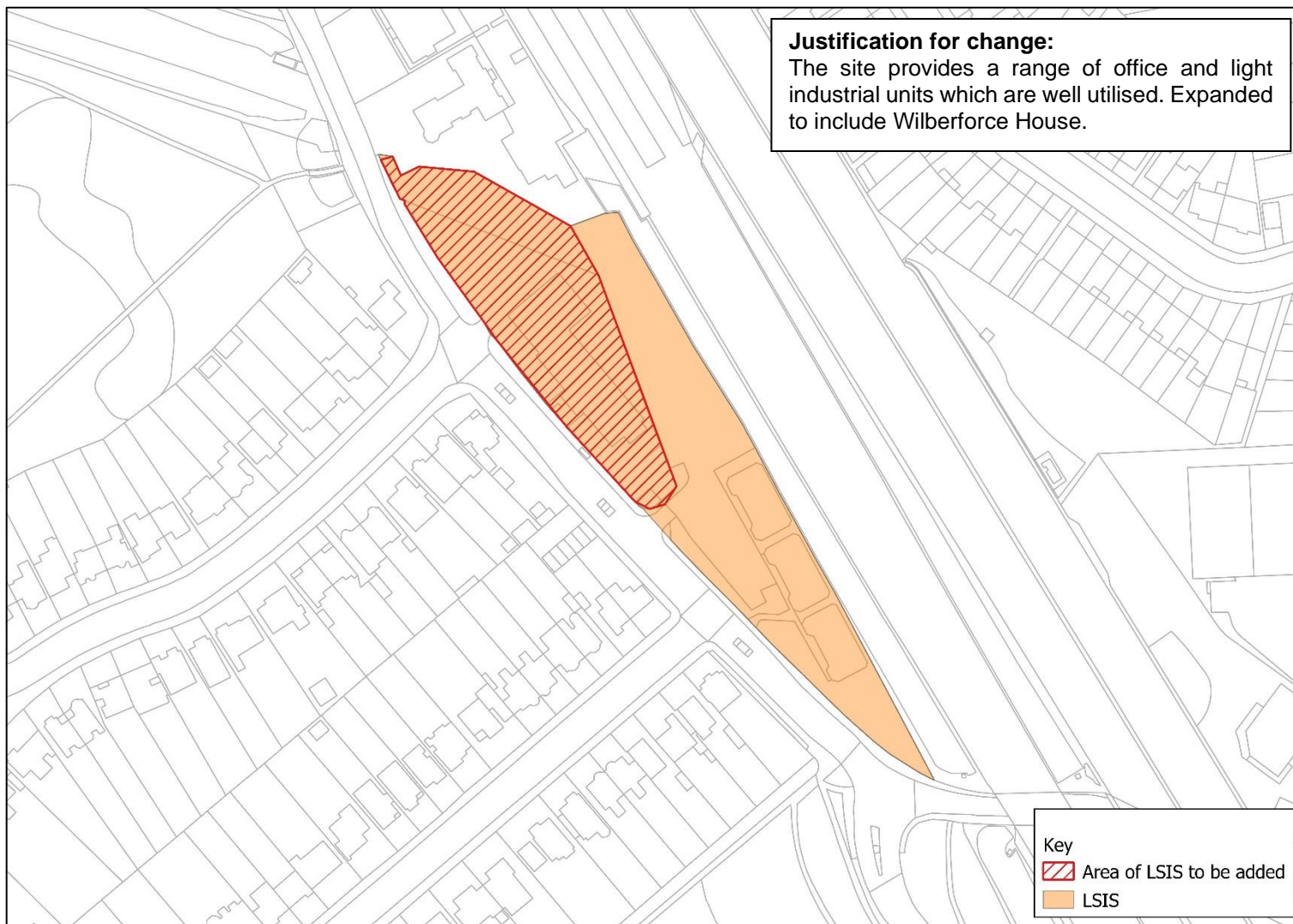
Map 39 – Hoop Lane and West London Synagogue Cemeteries



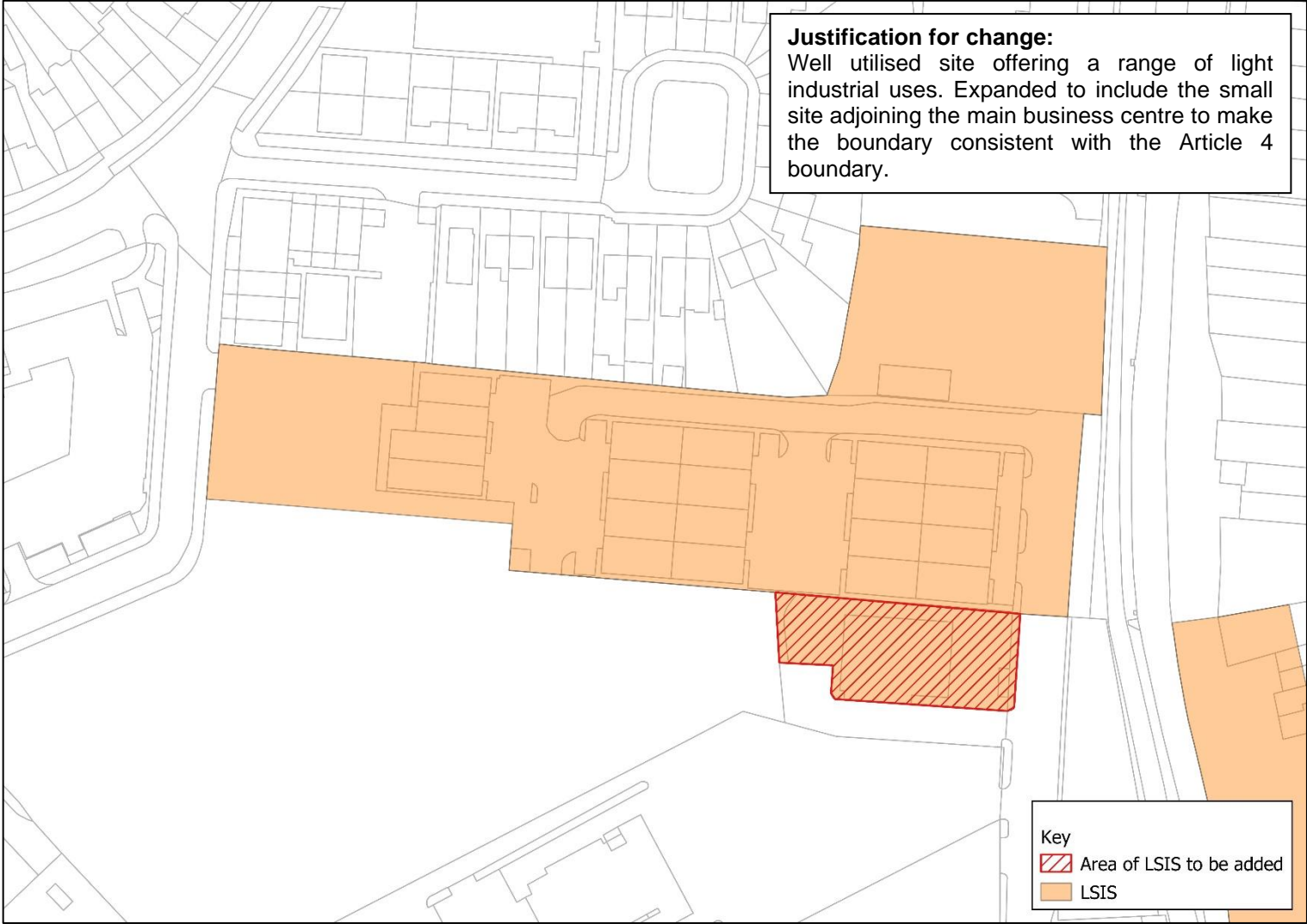
4.3 Locally Significant Industrial Sites (LSIS)

- 4.3.1 Amendments to the LSIS boundaries are set out in Maps 40-49. The remaining LSIS, as set out in the Local Plan (Reg 19) will be taken forward with no change.

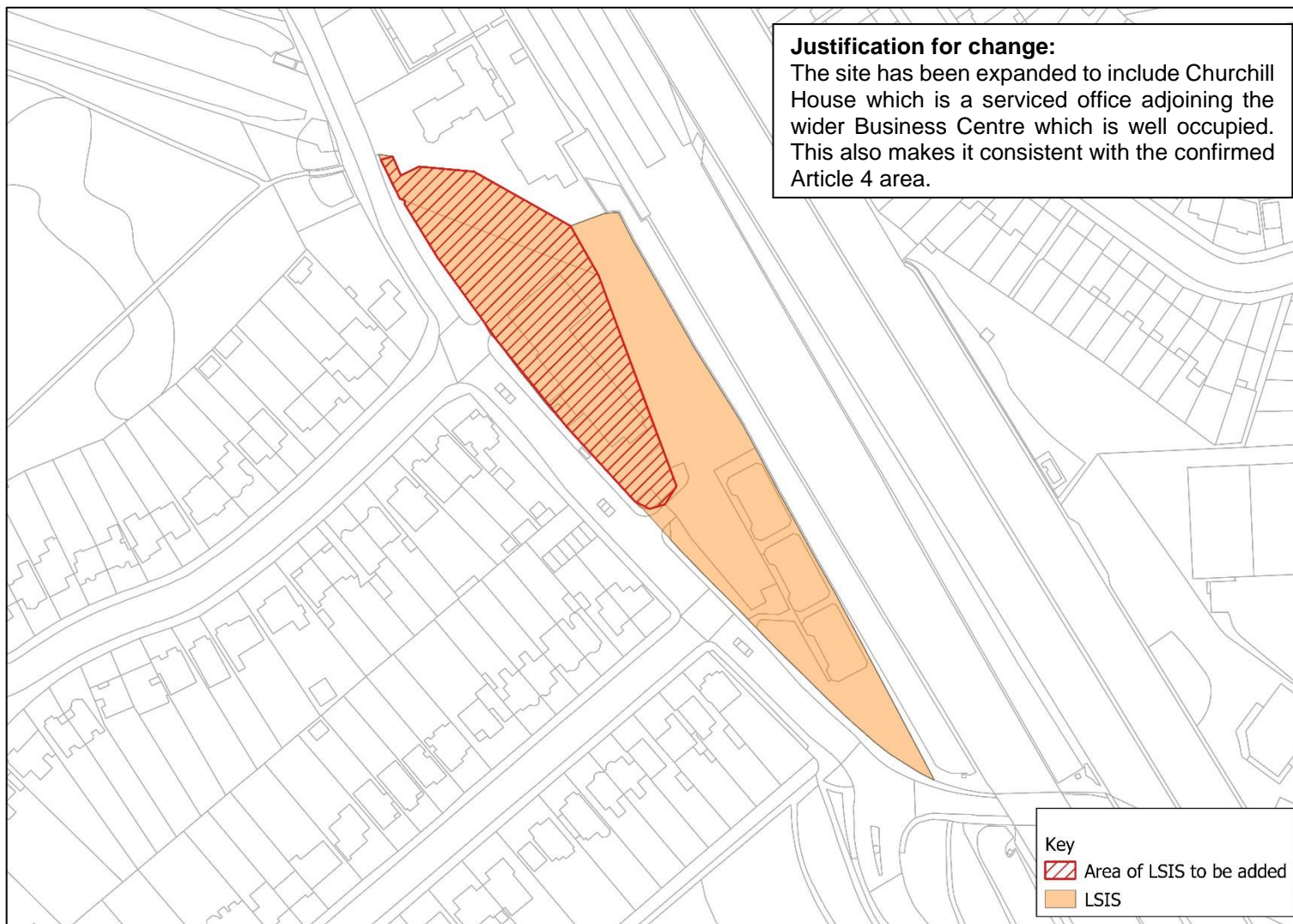
Map 40 Garrick Industrial Centre



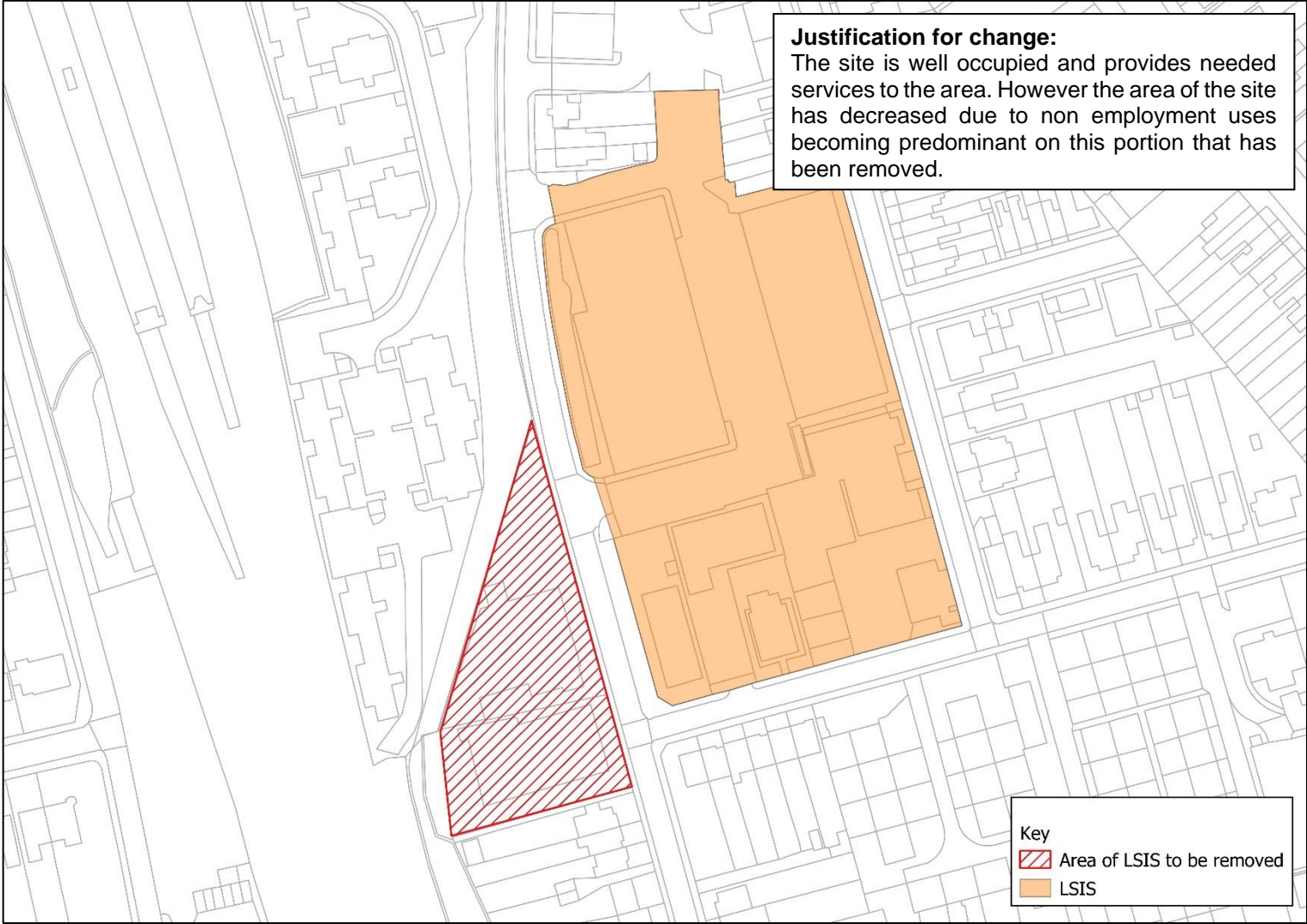
Map 41 Connaught Business Centre



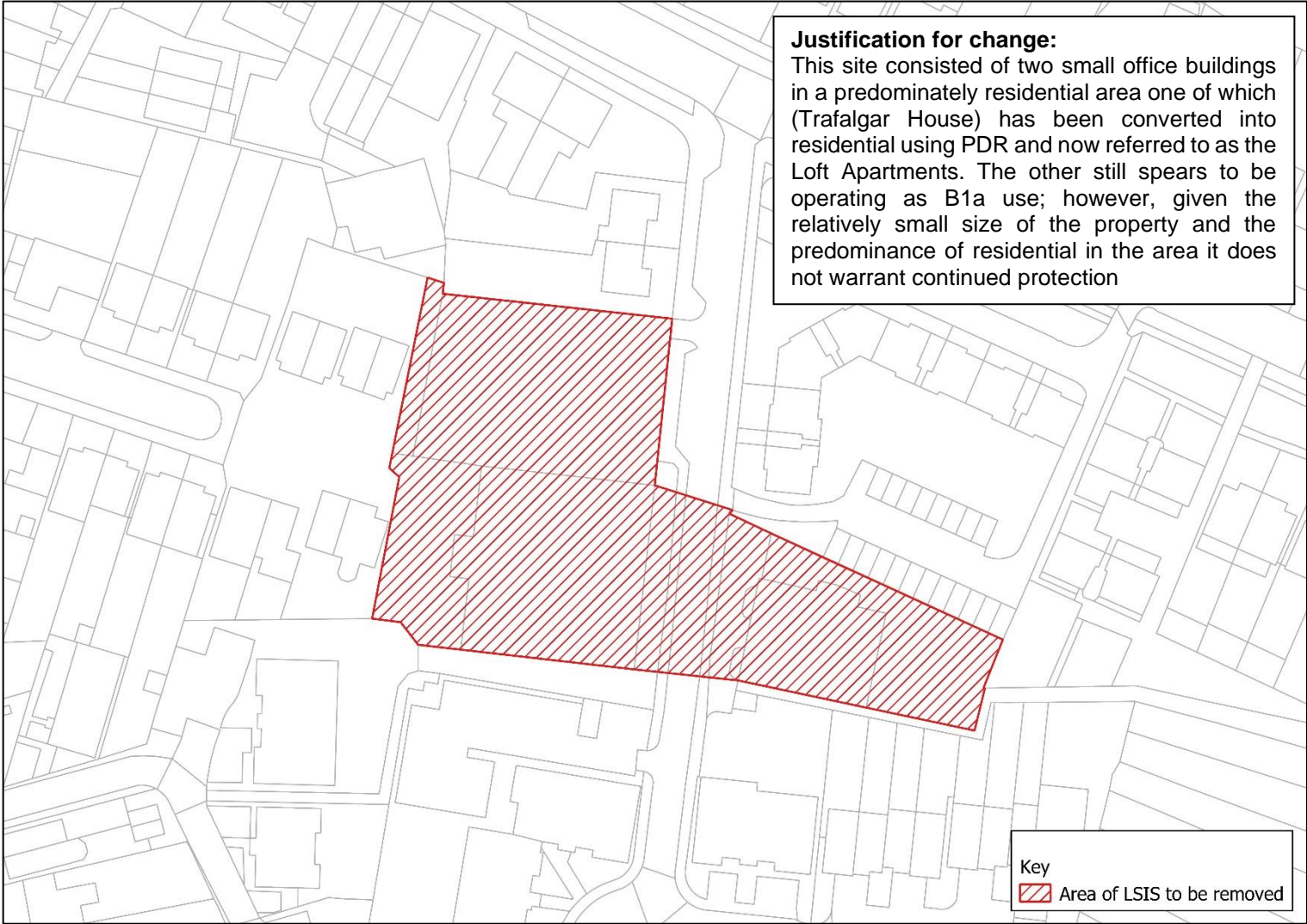
Map 42 Grannard Business Centre



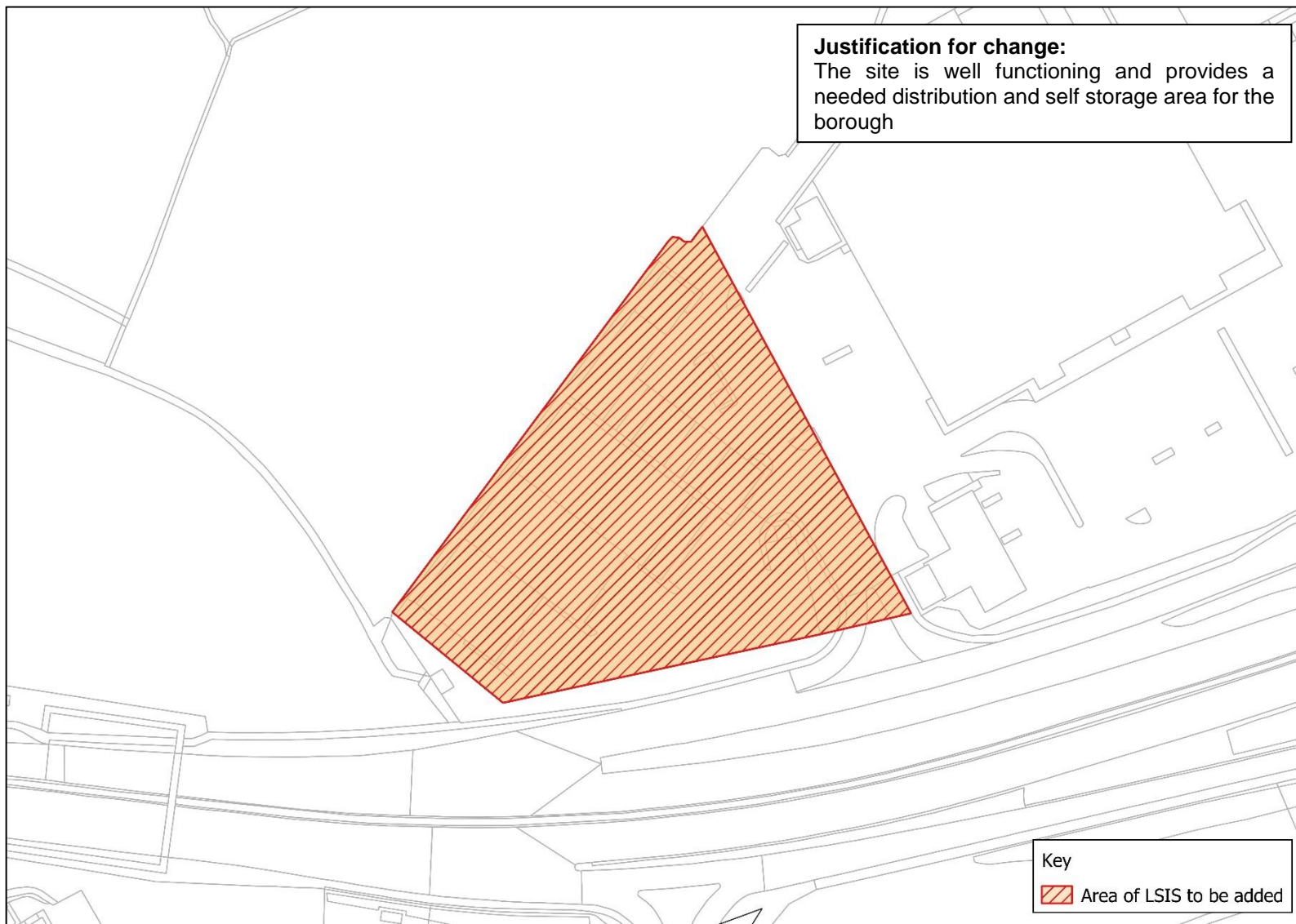
Map 43 Lancaster Road Industrial Estate



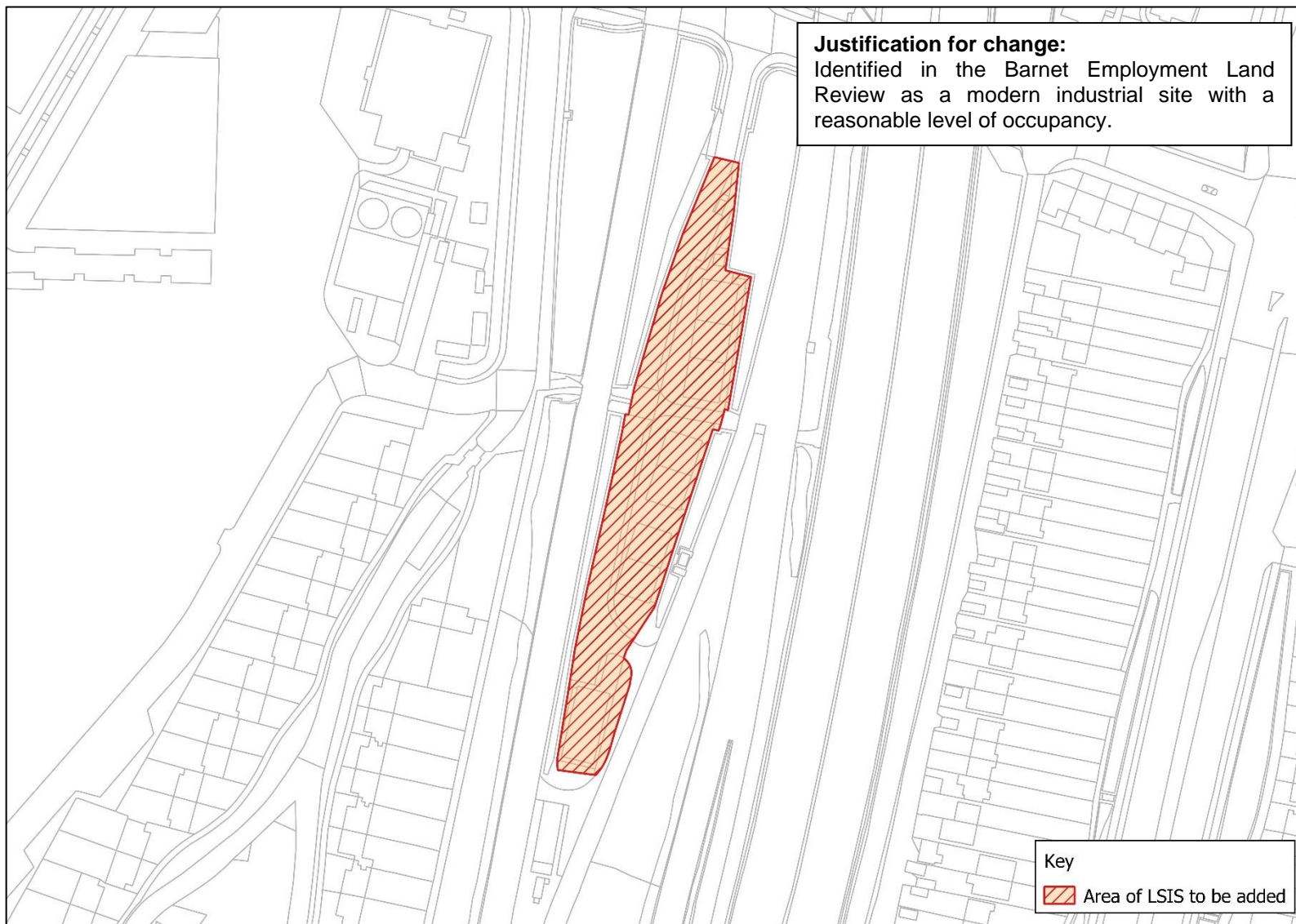
Map 44 Grenville Place



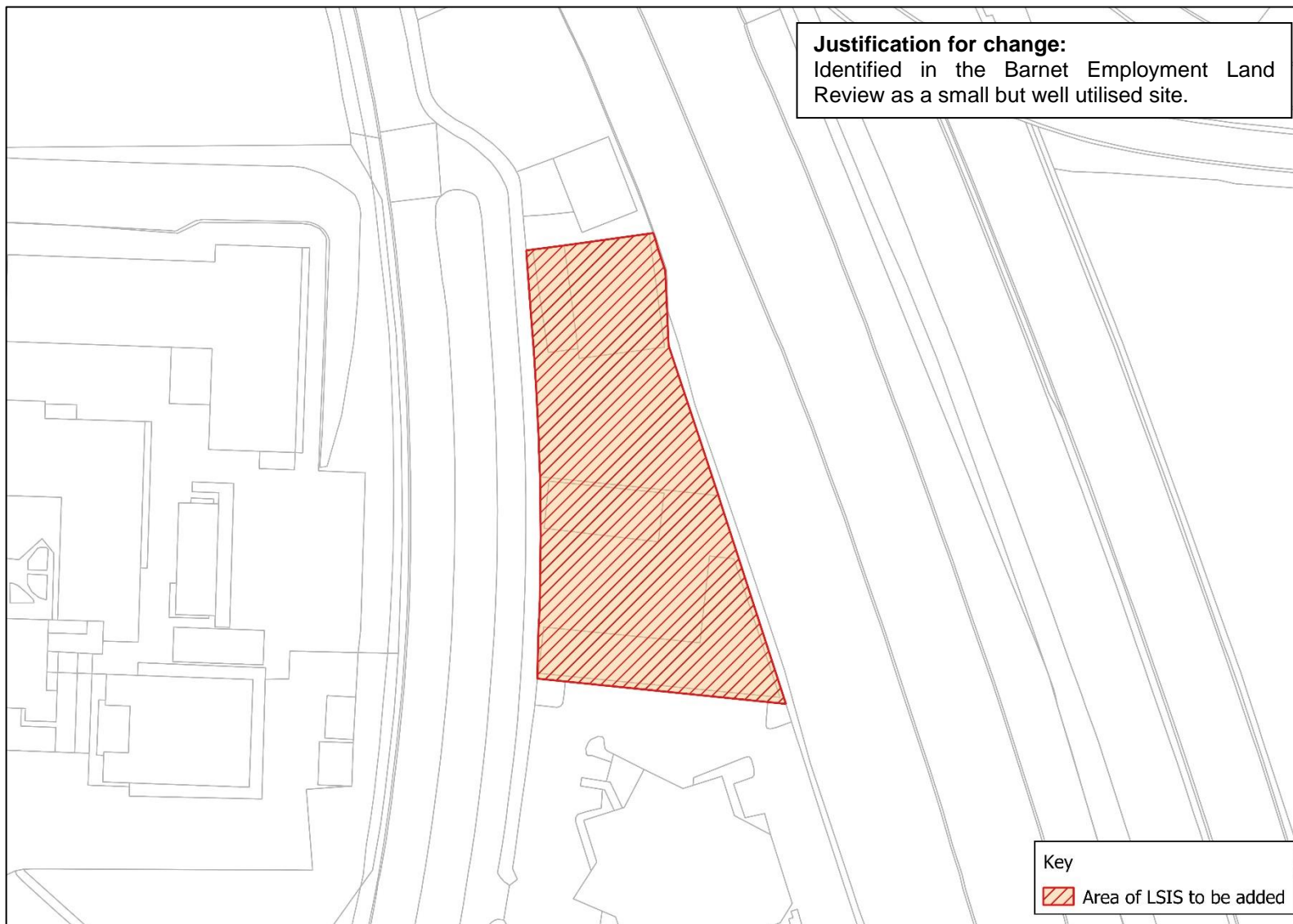
Map 45 Coppetts Centre, Colney Hatch Lane



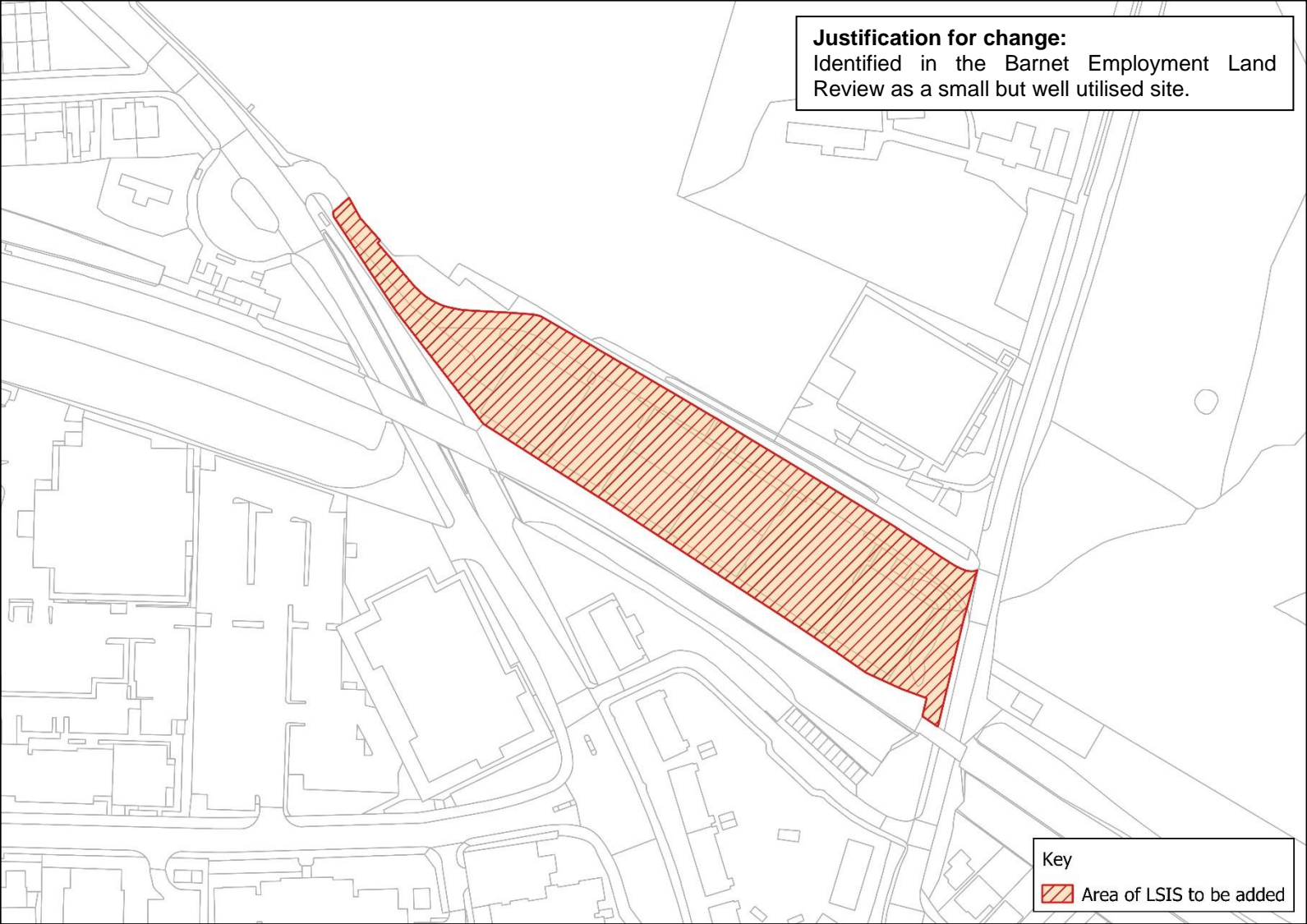
Map 46 Propeller Way



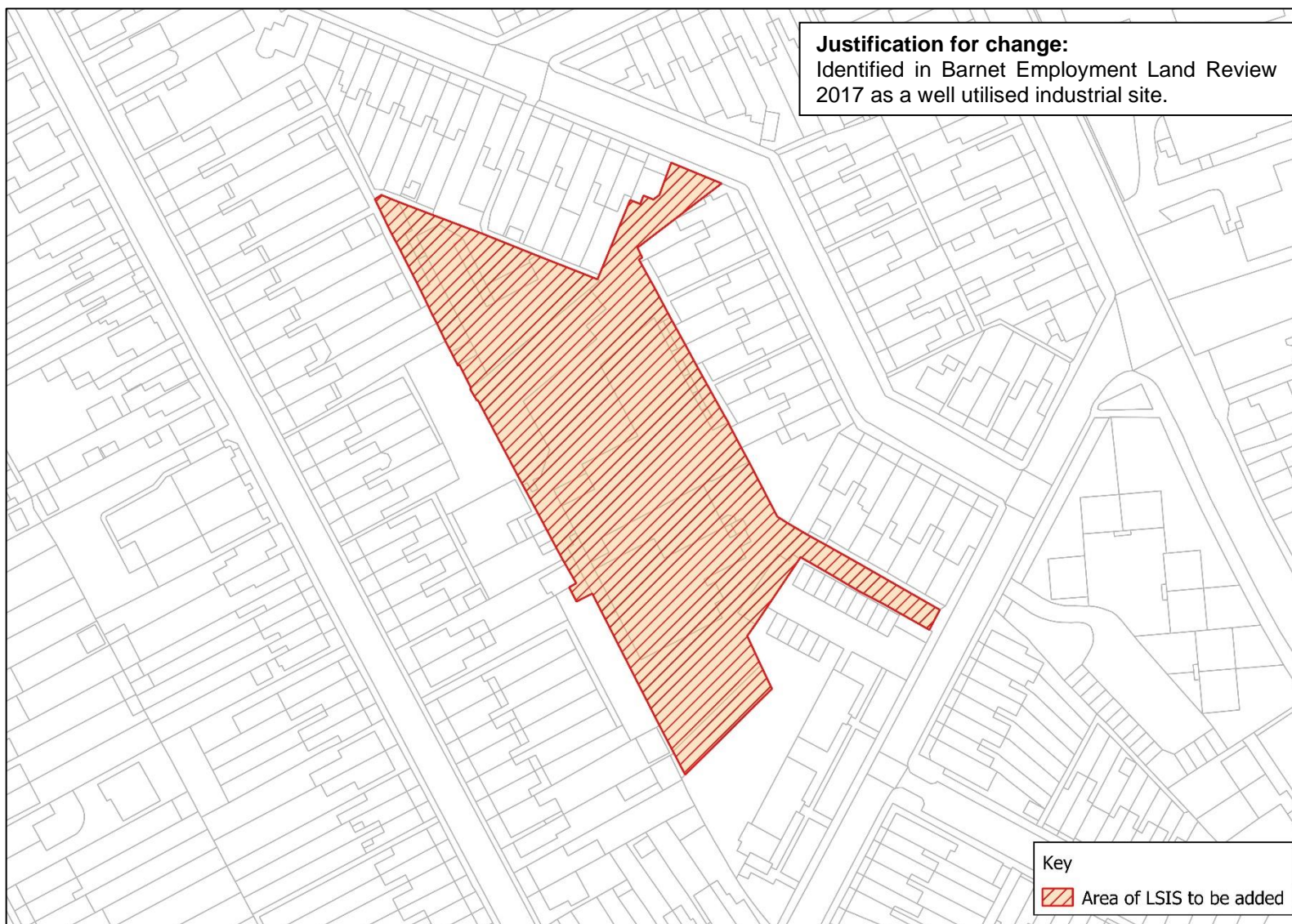
Map 47 Hurricane Industrial Park



Map 48 Bittacy Hill Business Centre



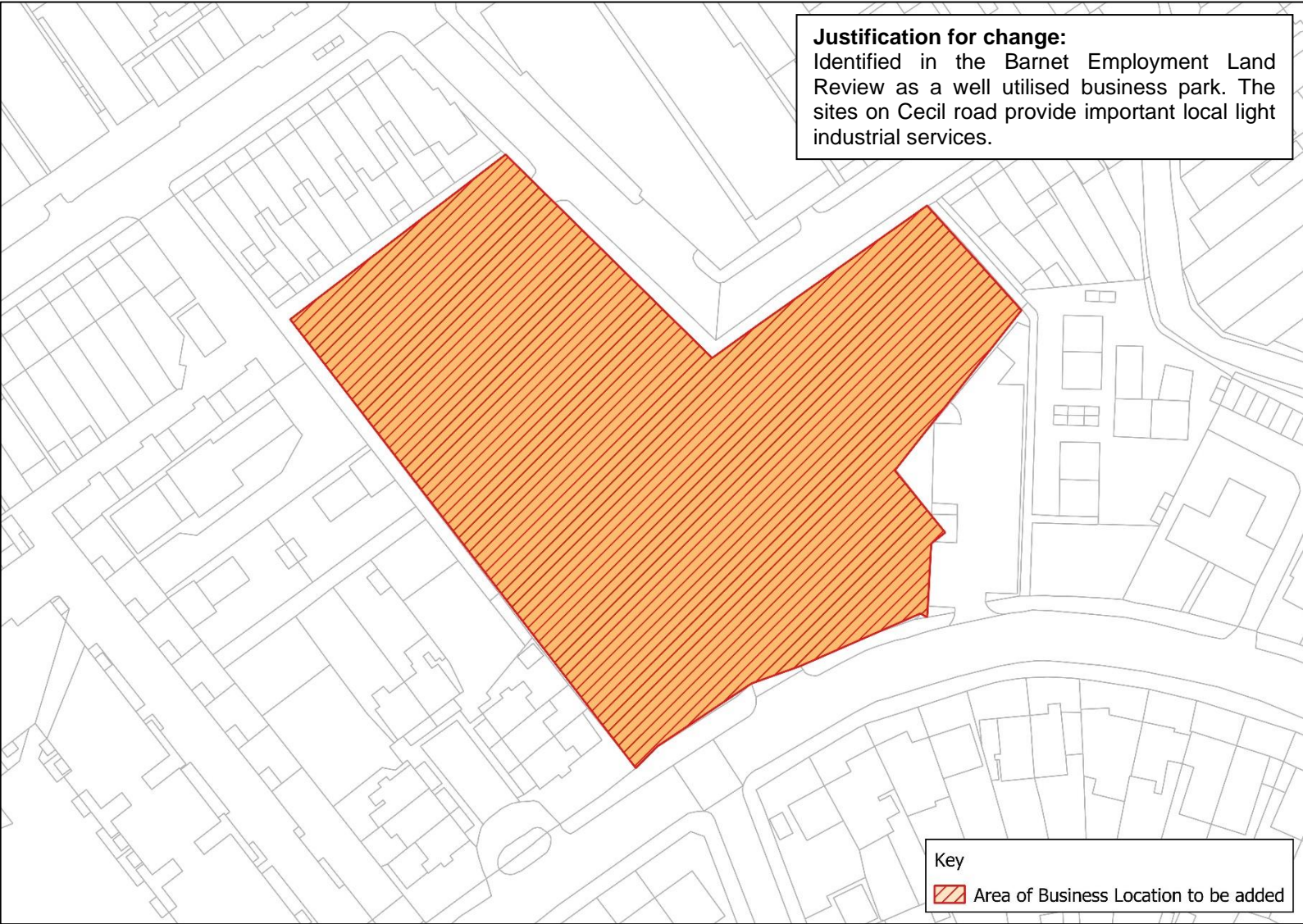
Map 49 Falkland Road (Alston Works)



4.4 Business Locations

- 4.4.1 Additions to the Business Location boundaries are set out in Maps 50-51. The remaining Business Locations, as set out in the Local Plan (Reg 19) will be taken forward with no change.

Map 50 Colindale Technology Park and sites off Cecil Road



Map 51 30-100 Colindeep Lane

