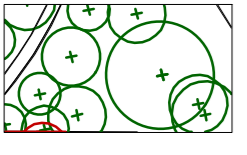
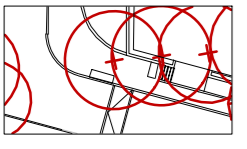


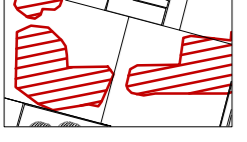
KEY



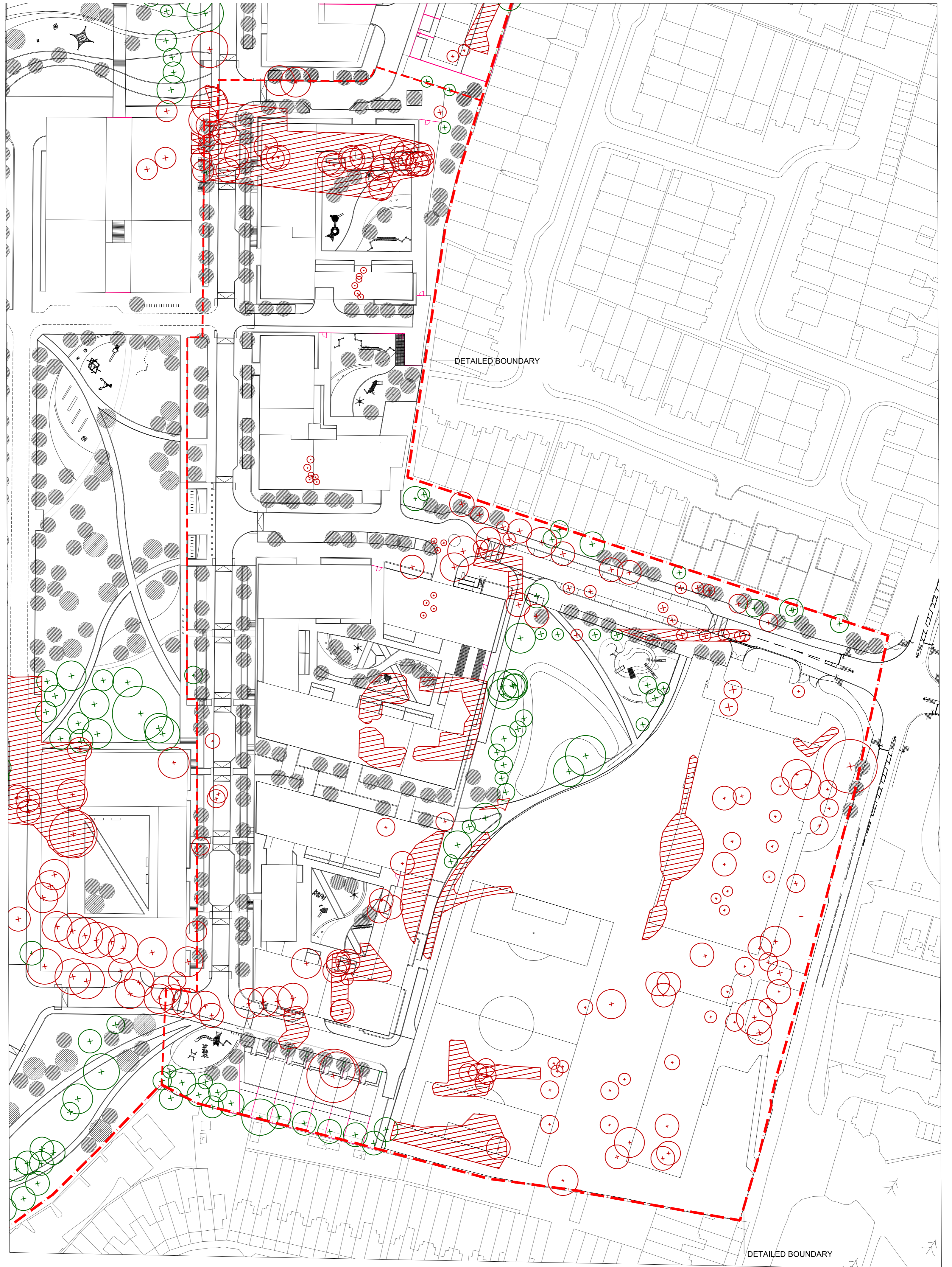
Existing trees to be retained



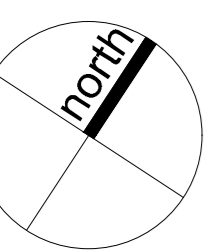
Existing trees to be removed



Existing tree group to be removed



NOTES:
To be read in conjunction with the Arboriculture Method Statement by Greengage.



NOTES:
This drawing is the copyright of Hyland Edger Driver. It must not be copied or reproduced without written consent. Only figures and dimensions are to be taken from this drawing. All contractors must visit the site and be responsible for taking and checking all dimensions related to the works shown on this drawing.

REVISIONS	DATE

REVISIONS	DATE
00 Issue for Planning	28.06.21

DATE	28.06.21	DRAWN BY	JSW	CHECKED BY	DC
DRAWING STATUS	PLANNING	SCALE	as at	1:750	
PROJECT	Royal Brunswick Park				
DRAWING TITLE	Tree for Retention Proposed Removal Plan				
DRAWING NUMBER	HED-1140-RBP-P01-1013				
REVISION	00				

CLIENT
Comer Group

H E D Hyland Edger Driver
Landscape Architects & Urban Designers
London & Winchester

Waterloo Court 19 Theat Street London SE1 8ST
One Wessex Way Cokkin Common Winchester SO21 1WG

L 020 7803 9636
L 01962 711 600