

# BRENT CROSS WEST STATION

## PROJECT UPDATE



The Brent Cross Thameslink programme will support the wider regeneration of the Brent Cross Cricklewood Area with the development of a brand new station and accessible public transport links in your neighbourhood. The new Brent Cross West station will connect Brent Cross to central London in just 15 minutes.

The project will also see the creation of replacement sidings, a drivers' accommodation centre, a waste transfer station and a rail freight facility. This project is being carried out on behalf of the London Borough of Barnet.

Keep up to date with the project and find the schedule of works at any time at [barnet.gov.uk/brentcrossthameslink](http://barnet.gov.uk/brentcrossthameslink)

## PROGRESS ON THE SIDINGS

The Brent Cross Thameslink project has made a lot of progress since our August update with a train operator's compound now completed and the sidings well underway.

We have completed construction of the accommodation for use by train staff and drivers. The work included the creation of a two-storey office and welfare building with associated car park, yards, lighting, fencing and gates.

This will enable up to 80 staff to prepare Govia Thameslink Railway's fleet of Thameslink trains for service ahead of transporting thousands of people into the Capital and to other destinations every day. The site is also where drivers are briefed and rest in between their shifts.

A new access road for Network Rail's operations has now been completed meaning that construction work is moving further away from residents.

Finally, a temporary fuelling station has been installed to allow diesel trains to be refuelled while waiting for the space to become available for the permanent tanks, which will be installed later in 2020.

### The next three months

Works on site are gradually shifting northwards and away from residential properties in preparation for the partial opening of the expanded South sidings in Spring next year.

Before this however, there is quite a bit of work to do in the area surrounding the new accommodation, including the removal of the old compound, and the installation of a storm water holding tank and a retaining wall.

*(continued overleaf)*



## DID YOU KNOW?

- The drivers' accommodation centre has been constructed off-site; this reduces the noise experienced by neighbours compared to on-site construction.
- 80 staff can be accommodated.



(continued from front page)

Some of this work will take place at night and over weekends (see programme on back page), but we will be carrying out the noisiest works such as sheet piling, mostly during the day to minimise our impact on residents.

Other works taking place over the next few months include the installation of more railway tracks, vehicle barriers and bollards and a buffer stop. It will also see new pedestrian and drivers' walkways, new pedestrian access gates, vehicle restraint barriers, overhead line equipment, and lighting.

All of this enables the realignment of the existing Midland Main Line railway tracks to create the extra space necessary for our new train station. Once complete the new sidings will complement the new train station and continue to help service the Thameslink service.



## SITE EXCELLENCE

**The Considerate Constructors Scheme is an industry watchdog that looks at a broad range of initiatives contributing to site safety, environmental protection and community relations. Amey was recently awarded a Certificate of Excellence for the works being carried out at the sidings.**

The award was given for a number of initiatives implemented on site from new ways of working to operative training, the introduction of mental health and tidy site champions, biodiversity management, site apprenticeships and promotion of the construction industry as a vocational pathway at local careers fairs, and providing professional and material support to community initiatives, such as the Clitterhouse Farm project.

Of course, safety is vital on any construction site and our neighbours need to be confident that we have systems in place that ensure their safety if they are visiting us. The Brent Cross Thameslink team is going above and beyond in terms of safety and, in September, we took part in the Civil Engineering Contractors Association's (CECA) cross-industry 'Stop. Make a Change' initiative.

Over 130 people from delivery partners including Amey, Capita, Graham and Site Works participated in the safety-focused event, which was organised by Network Rail and comprised nine separate interactive workshops and well-being sessions.

# YOU SAID, WE DID

Following our last update we've received some queries about our works from residents. Here are some of the most common, and the answers given to them.

**Q.** Some of the works are quite noisy, particularly at night. Can you do anything about this?

**A.** Night works, or any works at anti-social times are disturbing for those living nearby, and as a Considerate Constructor we always try to minimise our impact on our neighbours. Unfortunately, due to the nature of our work on, and beside, a live railway, which thousands of people use every day, we often have to operate when it is least used to minimise disruption to the travelling public. We also have

an intensive programme to prepare for the delivery of the new rail station. We have installed additional noise mitigation measures, such as sound quilting along our boundary with neighbouring properties and disabling vehicle reversing alarms where possible. We have also been undertaking extra noise monitoring, which we report on to residents each week.

**Q.** There is a lot of light emanating from site?

**A.** Our personnel need good light to work safely at night. That said, our planning permission is clear on the need to direct temporary lighting away from our neighbours and use task specific lighting instead of site-wide lighting where possible.

We're always looking to see if we can reduce our impact on our neighbours by using as little light as possible to complete our works safely.

**Q.** There are lorries trying to enter Brent Terrace, what are you doing about this?

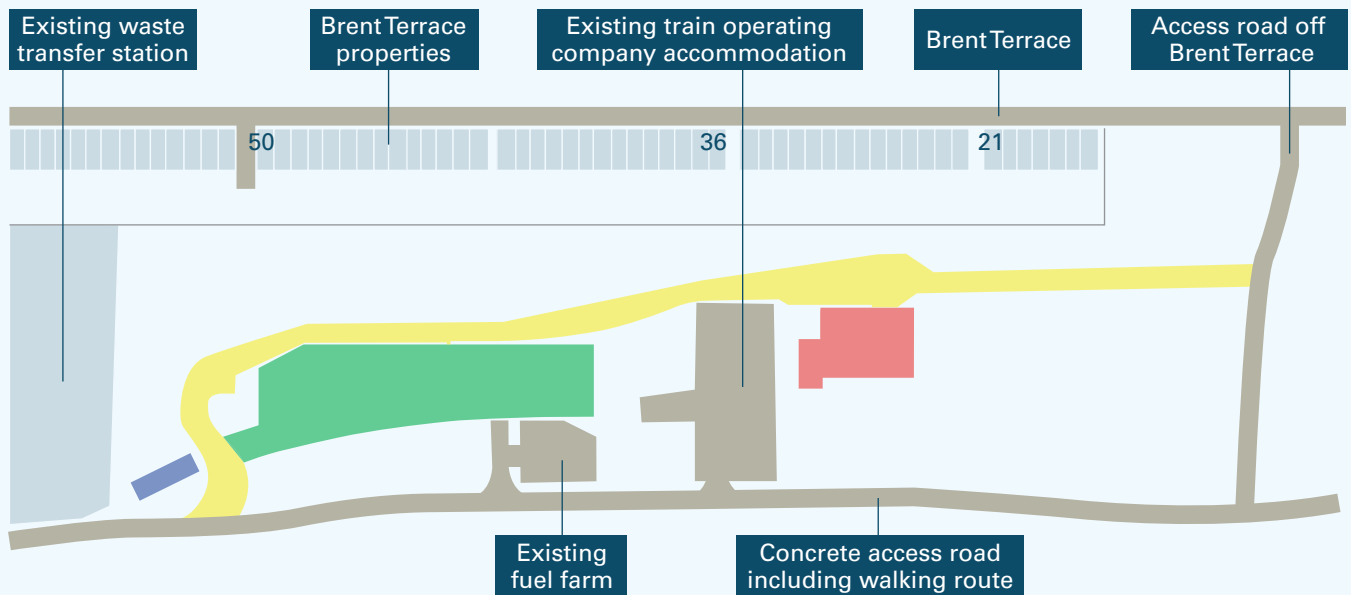
**A.** This is a concern to both us and our neighbours as construction related lorries should not be entering Brent Terrace and are a risk to our workers' safety as well. This is a historic issue to some extent as Brent Terrace is a no-through road and lorries have often been misguided into entering the residential end. We are acutely aware of this and all our contractors and sub-contractors are briefed not to enter Brent Terrace South. Any vehicles caught doing so would be turned away and action taken against them. Our site is also marked clearly on satellite navigation software so that lorry drivers don't get Brent Terrace South and Brent Terrace North confused.

If you spot an issue with our works or would like an answer to a question then please contact:

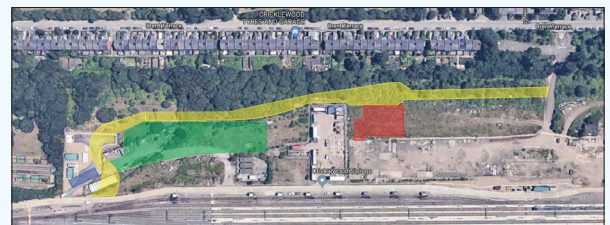
[BXCRgeneration@barnet.gov.uk](mailto:BXCRgeneration@barnet.gov.uk)

## SITE LAYOUT

In response to feedback from our last newsletter, residents in Brent Terrace asked to see where our works are happening in relation to their properties. This map and key explain the location of the works mentioned in the programme on the next page.



- New train operating company accommodation
- Temporary access road
- Temporary fuel farm location
- Stormwater runoff tank



## STATION UPDATE

A final detailed planning application for Brent Cross West Station (known as a Reserved Matters Application) has been submitted to the London Borough of Barnet as the relevant Planning Authority. It follows the outline planning permission for the Brent Cross West Station Quarter which was granted in 2010 and updated in 2014. The application will now be considered by the London Borough of Barnet's Planning Committee. To view the application you can go to [barnet.gov.uk/brentcrosshameslink](http://barnet.gov.uk/brentcrosshameslink) and follow the links or go directly to the London Borough of Barnet's planning portal.

# PROGRAMME UPDATES

We work hard to provide you with timely and accurate data on our works programme. However, with multiple and inter-dependent projects taking place within the rail corridor in your area to make way for the new Thameslink station at Brent Cross West, we do sometimes have to make adjustments to the project programmes as we proceed through the works.

The programme shown here is our current understanding of requirements but it is subject to change between newsletter issues and other notifications.

The latest available programme will always be available on the London Borough of Barnet website at [barnet.gov.uk/brentcrossthameslink](http://barnet.gov.uk/brentcrossthameslink) and we offer a regular update of works to our email subscribers (details on subscribing to this service are below).

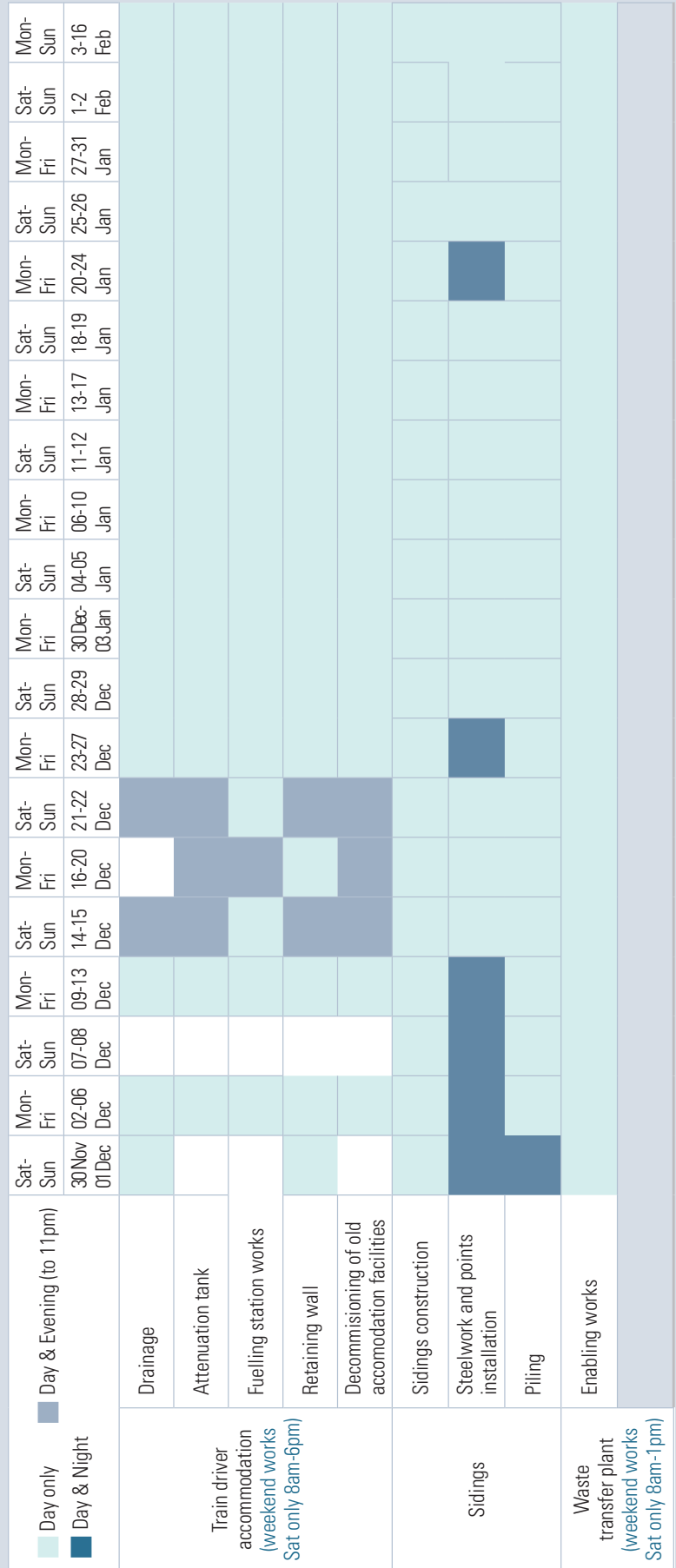
We will be working in the rail corridor over the Christmas period, to install the overline beams for electrification but these works will take place on the mainline beyond the old Jerico shed and should not be disruptive to residents. There will also be some non-intrusive signalling works and testing taking place.

## SUBSCRIBE TO NOTIFICATIONS

If you would like to receive regular notifications of site activity across the Brent Cross Thameslink project, please send an email with **SUBSCRIBE** as the subject to [BXCReneration@barnet.gov.uk](mailto:BXCReneration@barnet.gov.uk)

Please encourage others to sign up. You can unsubscribe at any time.

## NOVEMBER 2019 TO FEBRUARY 2020 WORKS PROGRAMME LOOKAHEAD



This programme is correct at the time of publishing. The latest programme can be found at [barnet.gov.uk/brentcrossthameslink](http://barnet.gov.uk/brentcrossthameslink)

### CONTACT US:

24/7 helpline: **0345 711 4141** (quoting Brent Cross Thameslink)

Or email us at [BXCReneration@barnet.gov.uk](mailto:BXCReneration@barnet.gov.uk)

OUR PARTNERS ON THE BRENT CROSS THAMESLINK PROJECT ARE



Registered site  
[www.ccscheme.org.uk](http://www.ccscheme.org.uk)

