

barnetrecycling

barnefirst supplement issue 55 September 2013

Letter from Councillor Dean Cohen about your waste and recycling

Dear Resident,

From October 14 we will be making improvements to your waste and recycling service. Houses and small flat blocks will see changes first, with larger flat blocks receiving the new food waste service in early 2014.

The improvements we are planning are probably the single biggest change a London council has made to how it runs its waste and recycling service.

Delivering these changes is a large task so please bear with us while we make the changes. Improvements include a new fleet of vehicles to make recycling collections as efficient as possible, delivering over 300,000 new bins and kitchen caddies, training our new recycling team to deliver great service, and creating new routes for same

day collections that residents can find online.

If you want to find out more about the changes visit: www.barnet.gov.uk/14-October. If you still have any queries please contact us at first.contact@barnet.gov.uk or telephone 020 8359 4600.

Yours faithfully
Councillor Dean Cohen
Cabinet Member
for Environment



How is your service changing and why?

From 14 October we are making it easier for you to recycle more.

Residents have told us that they want it to be easier to recycle and we are making the following changes to achieve this:

- we will accept all your recycling in the same bin
- we will accept more plastics in your recycling
- we will be collecting food waste and garden waste separately
- for most residents we will collect refuse, mixed recycling and food waste on the same day

The new service will make it easier to recycle by collecting mixed recycling materials together, with no need to sort them. We have also added more items that you can recycle including yogurt pots, margarine tubs and food trays. Your existing black bin will be for non-recyclable household waste and will continue to be collected weekly.

Currently residents in Barnet recycle compost or reuse around 33 per cent of their household waste. More than 70 per cent of household waste could be recycled, composted or reused. This means we can more than double what we currently recycle, compost or reuse.

 recycle for Barnet

14 October

BARNET
LONDON BOROUGH

New mixed recycling service

If you live in a house, flat within a house or small block of flats up to five properties, you will receive a new blue bin. For flats with up to five properties there will be two blue bins to share.

For flats with up to 16 properties currently using the box service, look out for new blue bins in your bin area which you can share with your flat block.



starts 14 October

mixed paper and cardboard	
Yes please	No thanks
✓ newspapers	✗ tissue paper
✓ greeting cards	✗ dirty cardboard packaging
✓ junk mail	✗ books
✓ clean cardboard packaging	✗ wet wipes
✓ egg boxes	
✓ magazines	
✓ catalogues	
✓ flattened/corrugated cardboard boxes	



mixed glass bottles and jars	
Yes please	No thanks
✓ bottles	✗ drinking glasses
✓ jars	✗ bowls/vases
	✗ light bulbs
	✗ window glass
	✗ Pyrex
	✗ spectacles
	✗ bottle and jar lids



cartons	
Yes please	No thanks
✓ milk and juice cartons	✗ cartons still containing liquid
✓ soup and vegetable cartons	
✓ Tetrapak	

food tins and drink cans	
Yes please	No thanks
✓ food tins	✗ dirty foil and food trays
✓ drink cans	✗ full aerosols
✓ empty aerosols	✗ biscuit tins
✓ clean foil	✗ jar lids
✓ foil trays	✗ 'scrap metal'
	✗ cans still with contents
	✗ paint cans

household plastic packaging	
Yes please	No thanks
✓ plastic bottles	✗ plastic bags
✓ food trays	✗ plastic wrapping and cling film
✓ yogurt pots	✗ plastic bottle lids
✓ margarine tubs	
	✗ foam polystyrene packaging, trays and cups
✓ fruit punnets	✗ crisp packets
	✗ plastic furniture



new items

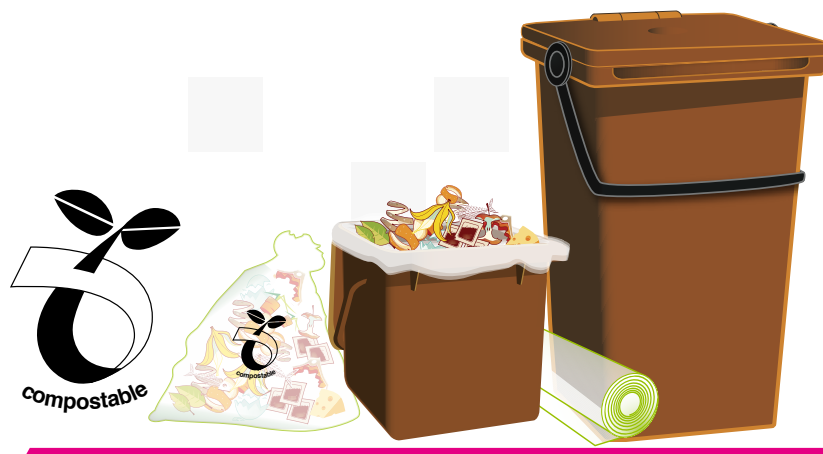
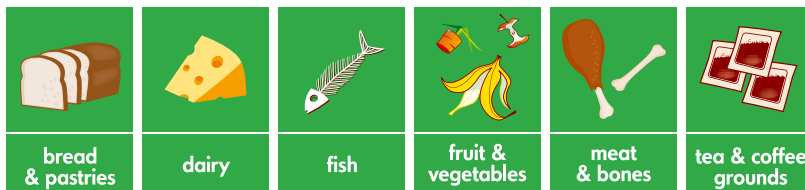
New food waste service

We are providing residents with a food waste collection, as more than 30 per cent of the waste in an average household bin is currently food waste. Disposing of food waste in your refuse bin is costly and damaging to the environment as it produces harmful gases, which contribute to climate change. By separating your food waste and not putting it in your refuse bin, we can reduce refuse disposal costs and minimise our impact on the environment.

If you are signed up to our green bin collection service, please do not put food waste into the green bin.



food waste	
Yes please	No thanks
✓ meat and bones – cooked and uncooked and including leftover meals	✗ plastic bags
✓ fish	✗ nappies
✓ dairy products	✗ animal faeces
✓ fruit and vegetables	✗ cooking oil
✓ bread and pastries	✗ large meat carcasses
✓ tea and coffee grounds	
✓ eggs and egg shells	



Find out your new collection day

- to find out your new waste and recycling collection day, visit the Bin Information Directory at: www.barnet.gov.uk/recycling
- please place your bins at the boundary of your property by 6.30am on your collection day
- from 7 October, you can start using your new bins. These bins will be collected during the week commencing 14 October, on your new collection day
- recycling, refuse and food waste will be collected weekly on the same day, for most residents



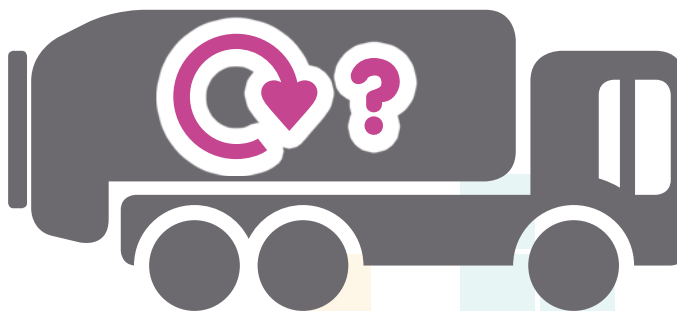
- if you are signed up to the green garden waste service your green bin will be collected every two weeks. You will receive information on your green bin with a calendar of collection dates in the coming weeks.



What happens to your recycling?

The items for recycling will be collected altogether and then taken to a 'Materials Recovery Facility', where the different materials will be separated both by hand and through mechanical processes.

They will then be transported to different reprocessors both in the UK and abroad to be made into new materials such as newspapers, plastic packaging and cans.



If you need advice or have further questions about the new recycling service, you can contact us by email: first.contact@barnet.gov.uk
or call: 020 8359 4600

For more information about the new service, visit:
www.barnet.gov.uk/14-october